

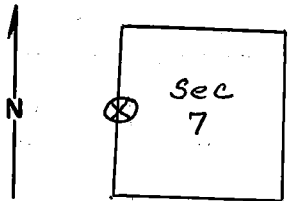
Index
File No. G-1

CORNER RECORD (SEARCH)
(Ref. FSM 7151.4)

Tract or
Survey No. Cor. No.

T SS R. 30E R.D. Ukiah County
Merid. W.M. N.F. Umatilla State Oregon

CORNER DIAGRAM



DESCRIBE CORNER MONUMENT FOUND

Found a stone 14x8x4 mared 1/4. Stone above ground, good condition.

DESCRIBE BEARING TREES OR OTHER OFFICIAL ACCESSORIES FOUND

Stone painted red. Has an excellent 1/4 on it. One ponderosa 32.7" in DBH bearing N 85° E from stone about 65'.

PHOTO IDENTIFICATION DATA

Photo No.
Filed At.
Object Ident.
Ident. By
Signature

DESCRIBE CORNER LOCATION RELATIVE TO NEAR-BY FEATURES, ALSO HOW TO REACH CORNER

PLANE COORDINATE POSITION DATA

State Zone
X
Y
Estab. By
Agency

Signature
M.L. Christian

Title F.T. Division Headquarters

Date 5/4/76

CORNER RECORD (PERPETUATION)

MONUMENT: DESCRIBE NEW MONUMENT SET, OR WORK DONE TO PRESERVE EXISTING MONUMENT

9

ACCESSORIES : DESCRIBE NEW BT'S WITNESS OBJECTS ETC. ESTABLISHED, OR WORK DONE TO PRESERVE EXISTING EVIDENCE

Put a steel post about 3' west of stone with two attention signs attached to it. Painted a 6" red band around tree and also on scribing that is getting weather beaten but is still legible. The place for the scribed BT is over grown. Attached proper signs to tree.

10

Work Done By _____ Title _____ Date _____ State Registration No. _____
or Agency _____
Certified Cor. Record Prepared ? Yes No Filed At: _____ Date _____

11

REMARKS

Notes do not fit this corner.

12

Index File No. T. R. M. Tract or Surv. No. Cor. 13