

CERTIFIED RECORD OF LAND CORNER MONUMENTATION

HISTORY OF ORIGINAL CORNER ESTABLISHED:

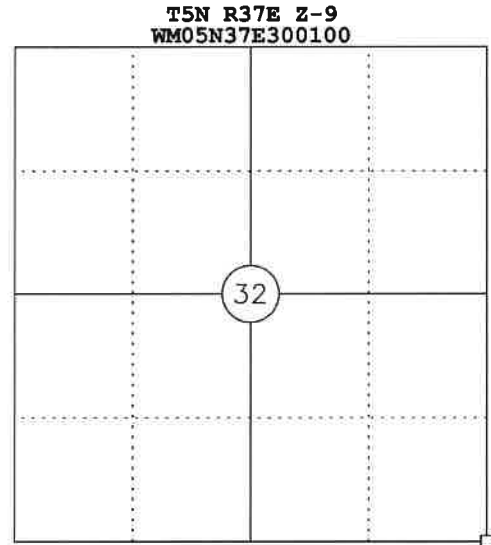
1879 G.L.O. SURVEY GEORGE PERSHIN
 "SET BASALT STONE 17X12X6 AND MARKED STAKE IN MOUND OF
 STONE ON STEEP SOUTH HILLSIDE FOR CORNER TO SEC. 32 & 33 ON
 STANDARD PARALLEL."

DESCRIPTION OF CORNER EVIDENCE FOUND:

FOUND STONE 17X11X16 +/- 2 FEET FROM OLD BARBED WIRE FENCE
 ON STEEP SOUTH FACING SLOPE.

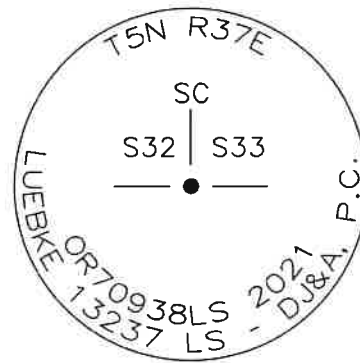
DESCRIPTION OF SET MONUMENT AND ACCESSORIES:

SET A 3-1/4" ALUMINUM CAP ON 3/4" x 30" REBAR STAMPED "T5N
 R37E SC S32 S33 OR70938LS 2021 LUEBKE 13237 LS - DJ&A,
 P.C." IN PLACE OF STONE; STONE SET UPSIDE DOWN ALONGSIDE.



NEW BEARING OBJECTS:

SET 1" RED PLASTIC CAPS ON 1/2" X 30" REBAR MARKED "DJA CP"
 IN EACH QUADRANT:
 -N44°39'47"E, 21.91'
 -N46°31'04"W, 18.81'
 -S45°25'59"E, 23.68'
 -S44°23'29"W, 27.02'



SURVEYOR'S CERTIFICATE:

I HEREBY CERTIFY THAT THIS CORNER WAS
 MONUMENTED ON MAY 19, 2021.

REGISTERED
PROFESSIONAL
LAND SURVEYOR

OREGON
JULY 9, 2002
KURT A. LUEBKE
70938

MONUMENT AND NEW REFERENCES WERE SET USING A
 TRIMBLE R10 GNSS SYSTEM.

NAD83 (2011) (EPOCH 2010.000)
LATITUDE: N45°51'38.40841"
LONGITUDE: W118°12'23.18568"

EXPIRES 12-31-2022