

OREGON CORNER RESTORATION FORM

COUNTY: Umatilla DATE: February 28, 2005

CORNER DESIGNATION: E-3 South 1/4 Corner Section 6, T. 5 North, Range 36 E.W.M.

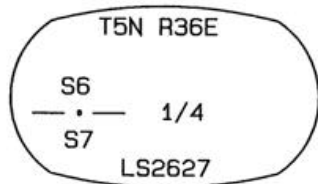
PREVIOUS RENEWALS/SURVEYS ETC.

Odell and Lewis set post, dug pits, and raised mound (Contract No. 110, dated February 7, 1865)

John Arnold tied in corner in his survey for County Road No. 299.

MONUMENT AND ACCESSORIES FOUND: None

MONUMENT MARKING DETAIL:



OREGON STATE PLANE COORDINATES, NORTH ZONE, NAD '83 ('91), INT. FEET:

NORTH: 833, 259.27

EAST: 8, 745, 996.09

MONUMENT SET (PROCEDURES AND DESCRIPTION):

Accepted the intersection of the County Road and a north-south plow line to the south as the best evidence of the corner location and set a railroad spike stamped as shown in the monument detail flush with the asphalt road surface.

NEW ACCESSORIES:

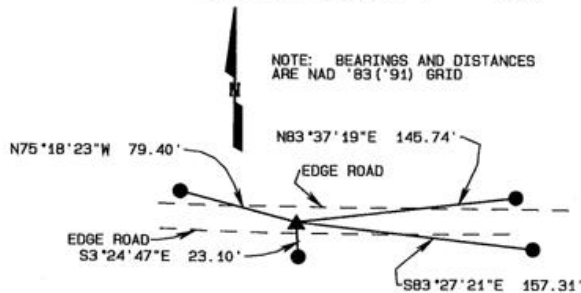
A 5/8" X 30" iron rebar with yellow plastic cap marked "UCPWD...LS2627" bears S3°24'47"E, 23.10'. A bearing object tag and "DO NOT DISTURB" sign are wired to an angle iron line post which bears 0.5' southwesterly.

A 5/8" X 30" iron rebar with yellow plastic cap marked "UCPWD...LS2627" bears S83°27'21"E, 157.31'. A bearing object tag is wired to monument.

A 5/8" X 30" iron rebar with yellow plastic cap marked "UCPWD...LS2627" bears N83°37'19"E, 145.74'. A bearing object tag is wired to monument.

A 5/8" X 30" iron rebar with yellow plastic cap marked "UCPWD...LS2627" bears N75°18'23"W, 79.40'. A bearing object tag is wired to monument.

SKETCH: SCALE 1" = 100'



NOTE: BEARINGS AND DISTANCES ARE NAD '83 ('91) GRID

▲ SET RAILROAD SPIKE FLUSH WITH PAVEMENT MARKED AS SHOWN IN MONUMENT MARKING DETAIL

● SET 5/8" X 30" IRON REBAR WITH YELLOW PLASTIC CAP MARKED "UCPWD...LS2627"

LOCATION AND COMMENTS:

From the intersection of Milton Cemetary Road and Grant Road travel east approximately 1/2 mile to corner.

COMPASS DECLINATION:

N/A

FIRM/AGENCY:

Umatilla County Road Dept. 3920 Westgate Pendleton, Oregon 97801

PARTY CHIEF:

Gary Roberts

NOTES:

WITNESS:

SURVEYOR'S SEAL

REGISTERED PROFESSIONAL LAND SURVEYOR

Gary R. Roberts OREGON JULY 30, 1993 GARY R. ROBERTS 2627

RENEWS 12/31/06

05-051-C