

OREGON CORNER RESTORATION FORM

Section 3 Township 5N Range 36E
 County Umatilla Date: May 25, 2012

Corner Designation: 5N36C13

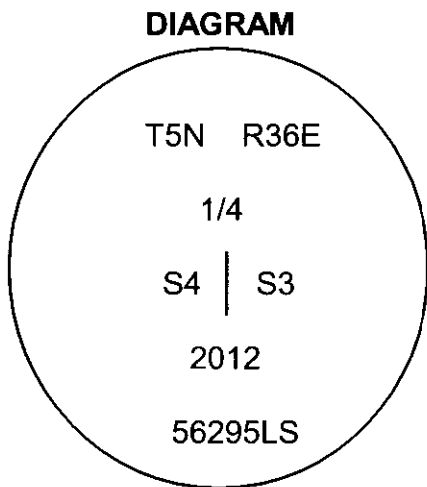
Quarter corner common to sections 3 and 4, T5N, R36E, W.M., Umatilla County, Oregon.

Condition Report Only
 Not found
 Remonumented
 Unrecorded
 Surveyed in
 Referenced out

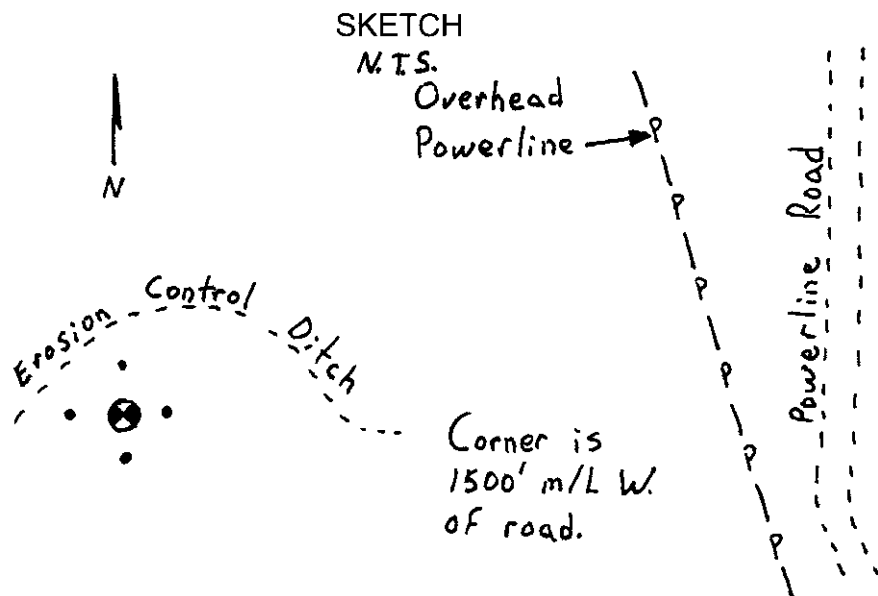
Previous Renewals / Surveys, etc.

Corner was originally set by Odell and Lewis under contract No. 110 dated February 7, 1865. Their record reads: Set 1/4 Sec. post. Drove charred stake, dug pits and raised mound as per instructions.

Monument and Accessories found: (condition and source)
 None. This point falls in a plowed field.



⊗ = Brass cap.
 • = Rebar reference.



MONUMENT (S) AND ACCESSORIES SET (Procedures and Description)

Set a 1 1/2" x 30" galvanized iron pipe with a 2 3/8" brass cap stamped as shown in the diagram above 2 feet below the surface of the plowed field at the proportioned point.

For references, I set four 5/8" by 24" iron rebars with 1 1/8" orange plastic caps stamped WTS and 56295LS as described below 2 feet below the surface of the plowed field:

- an iron rebar bears N05°05'23"W, 24.18 feet;
- an iron rebar bears N88°00'27"E, 23.69 feet;
- an iron rebar bears S02°01'01"W, 26.49 feet;
- an iron rebar bears S89°14'12"W, 26.55 feet;

The monument was set and references were tied using Trimble R7/R8 RTK GPS.

Location and comments
 NAD 83/1991 State Plane Coordinate
 Oregon North Zone
 N = 836438.97 ift
 E = 8759241.61 ift

Compass Declination
 Firm / Agency
 Witness Tree Surveying
 Address
 P.O. Box G
 Pilot Rock, Or. 97868
 Party Chief
 Stephen K, Haddock

Surveyors Seal

REGISTERED
 PROFESSIONAL
 LAND SURVEYOR

Stephen K. Haddock

OREGON
 JULY 9, 2001
 STEPHEN K. HADDOCK
 56295LS

RENEWAL DATE 6-30-13

RECEIVED BY:
 Umatilla County Surveyor
 Date: 6/5/2012
 Rec'd By: A. Oles
 No. 12-088-C