

OREGON CORNER RESTORATION FORM

COUNTY: Umatilla DATE: 03/08/05

CORNER DESIGNATION: 5N35, V-17, The Southeast Corner of Section 27.

PREVIOUS RENEWALS/SURVEYS ETC.:

Corner originally established by Odell & Lewis, under GLO Contract No. 110, dated February 7, 1865. Notes state: Set post Cor. for Secs. 26, 27, 34 & 35. Drove charred stake; dug pits; raised mound, as per instructions.

MONUMENT AND ACCESSORIES FOUND: None.

MONUMENT MARKING DETAIL:

T5N R35E
S27 | S26
S34 | S35
2005
PLS 1106

MONUMENT SET:

I re-established this corner by holding a North-South field berm North of the corner point for departure, and the Westerly projection of a old fence line to the East, for latitude. The corner falls in a wheat field. At the re-established corner position, set a 2 1/2" brass cap on a 1 1/4" by 30" galvanized iron pipe with cap 20" below ground, marked as shown in Monument Marking Detail. The re-established corner position checks well with a straight line between the South 1/4 corners of Sections 26 and 27.

New accessories:

A silver deep-1 magnet, buried 20" in ground, bears North 20° East, 36.7 feet.
A purple deep-1 magnet, buried 20" in ground, bears South 54° East, 39.3 feet.
A blue deep-1 magnet, buried 20" in ground, bears South 29° West, 39.4 feet.
An orange deep-1 magnet, buried 20" in ground, bears North 61° West, 40.3 feet.
Buried bearing object signs with deep-1 magnets.

LOCATION AND COMMENTS: Corner is in a farmed field.

OREGON STATE PLANE COORDINATE, North Zone, NAD 83(91), International Feet:

N = 811810.85
E = 8733809.49

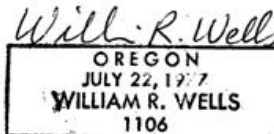
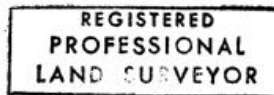
FIRM: William R. Wells, PLS
P.O. Box 1696
Pendleton, OR 97801

COMPASS DECLINATION: 18° East

Surveyor's Seal

Witnesses: Jason Wells, LSIT
Brian Cole

/5N35V17



Renews 6/30/06

05-112-C