

OREGON CORNER RESTORATION FORM

COUNTY: Umatilla DATE: 03/28/05

CORNER DESIGNATION: 5N35, J-09, The Southeast Corner of Section 8.

PREVIOUS RENEWALS/SURVEYS ETC.:

Corner originally established by Odell & Lewis, under GLO Contract No. 110, dated February 7, 1865. Notes state: Set post Cor. for Secs. 8, 9 16 & 17. Drove charred stake; dug pits & raised mound, as per instructions.

The corner was re-established by J.C. Arnold, in 1887, under Record of Private Surveys, Survey No. 27. Arnold's record states: "At proportionate distance and on true line, I set a basalt stone 17 x 8 x 5 1/2 ins., 12 ins in ground for cor. to secs 8, 9, 16, 17 T5N., R35E. Mkd 4 notches on S and E. about 300 links west of ravine, course N.E."

MONUMENT AND ACCESSORIES FOUND: None.

MONUMENT MARKING DETAIL:

T5N R35E

S8 | S9

S17 | S16

2005

PLS 1106

MONUMENT SET:

Corner area falls in area which has been farmed in the past. I searched for Arnold's stone without success. There is a established fence and field line on the South side of a draw just South of the corner area. I re-established the corner position perpendicular to a line between the East 1/4 corner of Section 8 and the Southeast corner of Section 17, 1/3rd of the distance along the line. The established fence line South of the corner area was held for departure to re-establish this corner. At the re-established corner point, set a 2 1/2" brass cap on a 2 1/2" x 30" galvanized iron pipe, 30" in the ground. Monument is marked as shown in Monument Marking Detail. Placed a chunk of concrete next to corner monument.

New accessories:

A 5/8" x 24" rebar with a yellow plastic cap stamped "OR PLS 1106, WA PLS 17372", bears North 31° East, 60.0 feet.

A 5/8" x 24" rebar with a yellow plastic cap stamped "OR PLS 1106, WA PLS 17372", bears South 23° East, 34.3 feet.

A 5/8" x 24" rebar with a yellow plastic cap stamped "OR PLS 1106, WA PLS 17372", bears South 31° West, 36.4.

A 5/8" x 24" rebar with a yellow plastic cap stamped "OR PLS 1106, WA PLS 17372", bears North 24° West, 30.5 feet.

Set steel fence post 2 feet South of corner and attached "witness" sign. Attached bearing object signs to rebar accessories.

LOCATION AND COMMENTS: Monument is in a area currently not farmed, about 50 feet South of field road.

OREGON STATE PLANE COORDINATES, North Zone, NAD 83(91), International Feet:

N = 827398.16

E = 8722522.78

FIRM: William R. Wells, PLS

P.O. Box 1696

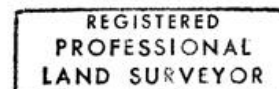
Pendleton, OR 97801

COMPASS DECLINATION: 18° East

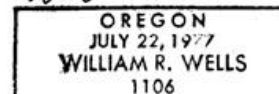
Witness: Jason Wells, LSIT

\5N35J09

Surveyor's Seal



William R. Wells



Renews 6/30/06

05-112-C