

OREGON CORNER RESTORATION FORM

COUNTY: Umatilla DATE: 02/21/05

CORNER DESIGNATION: 5N35, R-01, The Northwest Corner of Section 30.

PREVIOUS RENEWALS/SURVEYS ETC.:

Corner originally established by Odell & Lewis, under GLO Contract No. 110, dated February 7, 1865. Notes state: Set post Cor. for Secs. 24, 25, 19 & 30, on land sloping to N.E.; drove charred stake, dug pits and raised mound as per instructions. Survey No. 03-314-C computed a position for the corner but did not monument it.

In Record of Private Surveys, Survey No. 78, J.W. Kimbrell accepts the North end of a sod fence and monuments the corner with a stone 18 x 10 x 6.

MONUMENT AND ACCESSORIES FOUND: None.

MONUMENT MARKING DETAIL:

T5N
R34E R35E
S24 | S19
S25 | S30
2005
PLS 1106

MONUMENT SET:

The corner area falls in the middle of a farmed field with no features. I re-established the corner position by single proportionate measurement between the previously monumented West one-quarter corners of Sections 19 and 30. At the re-established corner position, set 2 1/2" brass cap on a 2 1/2" x 30" galvanized iron pipe 17" below ground, marked as shown in Monument Marking Detail.

New accessories:

- A silver deep-1 magnet buried 20" below ground level, bears North 50° East, 51.6 feet.
 - A purple deep-1 magnet buried 20" below ground level, bears South 55° East, 54.9 feet.
 - A blue deep-1 magnet buried 20" below ground level, bears South 41° West, 50.0 feet.
 - An orange deep-1 magnet buried 20" below ground level, bears North 43° West, 45.6 feet.
- Buried bearing object signs with deep-1 magnets. Buried "witness" sign with brass cap corner monument.

LOCATION AND COMMENTS: Corner is located in a farmed field. A North-South field line can be seen some distance to South. The West one-quarter corners of Sections 19 and 30 were remonumented on Survey No. 03-314-C.

OREGON STATE PLANE COORDINATE, North Zone, NAD 83(91), International Feet;

N = 816812.90
E = 8712364.17

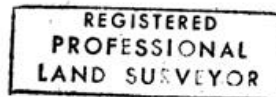
FIRM: William R. Wells, PLS
P.O. Box 1696
Pendleton, OR 97801

COMPASS DECLINATION: 18° East

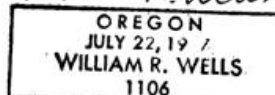
Witness: Jason Wells, LSIT

/5N35R01

Surveyor's Seal



William R. Wells



Renews 6/30/06

05-112-C