

# OREGON CORNER RESTORATION FORM

**Section:** 36  
**Township:** 5 North  
**Range:** 33 East of the Willamette Meridian  
**County:** Umatilla  
**Date:** 02/06/02

**Corner Indexing Information:** Township 5N Range 33E Corner Code Z-25 (Willamette Meridian)

**Additional Identifier:** (e.g. BLM designation for the corner, street intersection, plat name, block, lot, etc.)

Southeast corner Section 36

**Oregon Plane Coordinates:** N:805849.733 E: 8680984.562

**Zone:** North **Order:** second **Datum:** NAD83-91 **Convergence:** 1°19'59.4" **Scale Factor:** 0.99988005

**Previous Renewals/Surveys, etc.:**

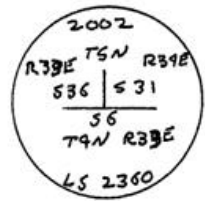
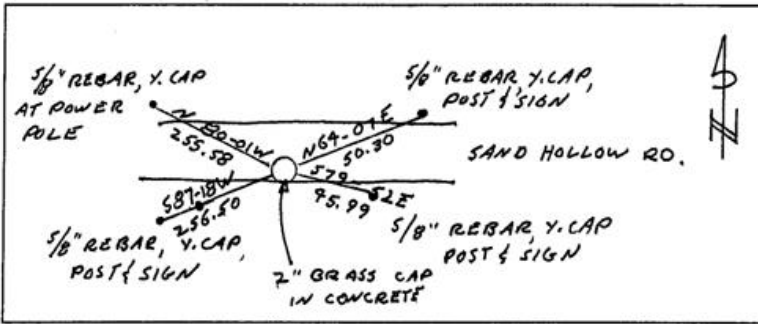
Corner was originally set by Odell and Lewis in 1866 under contract no. 110 as a charred stake, pits, and mounds. This is a corner set on the Standard Parallel as a Standard Corner. 1940 plans by Bonneville Power Administration show this corner as being 249 ft. East of intersection of power line and old county road centerline.

**Monument(s) & Accessories Found (Condition & Source):**

Corner not found. Power poles in Sections North and South of this corner are still in positions shown on the 1940 plans. Corner is reestablished from those poles, which caused us to ascertain that the current road is somewhat North of its prior position.

**Monument Set (Procedures & Description):**

**Monument Detail:**



**Location & Comments:**

**Compass Declination:**  
19° East

**Surveyor's Seal**

**Firm/Agency:** Tomkins Land Surveying, Inc.  
20 E. Poplar, Suite 204  
Walla Walla WA 99362

REGISTERED  
PROFESSIONAL  
LAND SURVEYOR

**Party Chief:** PWPT  
**Notes:**  
**Witness:** JLD

OREGON  
JULY 26, 1983  
PAUL W. P. TOMKINS  
2360

*renews 6/30/04  
2/1/03*

**RECEIVED BY**  
 Umatilla County Surveyor  
 Date 2-03  
 Rec'd By KK  
 No. 03-30-9