

OREGON COUNTY CORNER RESTORATION FORM

Section 19, 20, 29, 30 Township 5N Range 31E
 County Umatilla Date: 08-30-2006

Corner Designation: 5N31E R5

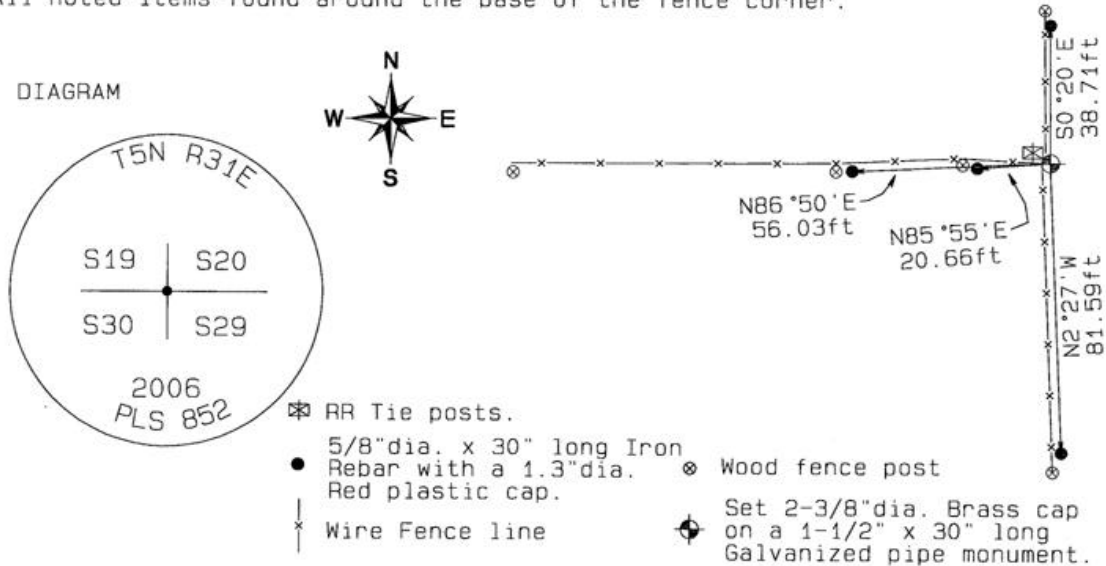
Condition Report Only
 Not Found
 Remonumented
 Unrecorded
 Surveyed In
 Referenced Out

Previous Renewals / Surveys, etc.

- 10-1874 N.Walden - Subdv (209) "Deposit Basalt stone 4x3x2 marked with a cross (+) and raised mound of earth with pits and charcoal as per instructions for Secs 19, 20, 29 & 30 Drove Alder Stake 2ft long 2in Square in S.E. pit."
- 10-1907 J.Kimbrell Survey # 257 Book 2, pg 63 "the cor to sec 19-20-29&30"
- 10-1940 ODOT (Dwg 5B-29-11) Corner indicated on map."Fc.Cor."

Monument and Accessories Found: (condition and source)
 Searched for stone - not found. Found RR tie fence corner. Yellow flagging in ground with 6" long nail and glass shards. Metal fragments. All noted items found around the base of the fence corner.

DIAGRAM



MONUMENT (S) AND ACCESSORIES SET (Procedures and Description)

Set a 2-3/8" dia. Brass Capped monument (stamped as shown) on a 1-1/4" ID x 30" long galvanized pipe 4" above the ground surface Southeast of the RR Tie fence corner.
 Set a Umatilla County Survey Marker sign facing East and South Highway 37 on a RR Tie fence post.

REFERENCES SET:

Set four (5/8" dia x 30" long Iron rebar with a 1.3" dia. Red plastic cap) to the bearings and distances from monument shown above in the sketch.

Made GPS tie to TRI Stations	Oregon State Plane Coord. - North Zone
LAURILA RESET RB 1379 and	Northing 815227.74
WALLS RB 1396	Easting 8590452.88
Latitude 45°53'33.59783"N	Ortho Height 1116.53
Longitude 118°58'29.14218"W	Ellipsoidal Height 1034.07
NAD 83(1991)	

Location and Comments

Compass Declination
 18°E

Surveyors Seal

Proceed NorthEast from the junction of HWY 37 and South Cold Springs Highway approximately 1.85 miles. Thence North and West along the ranch driveway 0.29 miles to the gate entrance of the North field access road. Thence through the gate and Northwest 880 feet up the hillside to the corner.

REGISTERED
 PROFESSIONAL
 LAND SURVEYOR

RECEIVED BY:

Firm / Agency

David L. Haddock

Date 02-07
 Rec'd By: *DHR*
 No.: 01-210-R

Haddock Surveying
 P. O. Box 1574
 Pendleton, OR 97801
 (541) 276-2174

OREGON
 JULY 12, 1968
 DAVID L. HADDOCK
 852

RENEWS 6-30-07