

OREGON CORNER RESTORATION FORM

Section 35,36 Township 5N Range 30E  
 County Umatilla Date: 05-08-2006

Corner Designation: 5N30E Z21

Condition Report Only  
 Not Found  
 Remonumented  
 Unrecorded  
 Surveyed In  
 Referenced Out

Previous Renewals / Surveys, etc.

- 02-1860 H.Maxon/J.Hurd STD PARALLEL (50) "Set post for corner to Sects. 35 & 36 in mound of earth, trench & pits as per instructions."
- 08-1861 D.Payne GLO Subdv (100) "Intersect N line Town 4 (Standard parallel) at post corner to secs 35 & 36 T5NR30, and secs 2 & 1 T4NR30E."
- 05-1966 W.Harris (C-16-B) "Found Stone"
- 05-1974 D.Krumbein (I-25-B) "FND STONE"
- 06-1974 D.Krumbein (I-24-B) "FND STONE"
- 06-1974 D.Krumbein (I-167-B) "FND STONE"
- 07-1979 L.Jones (Q-1129-C) "Stone FD by Harris 5/7/66 not FD by TEC 1979"

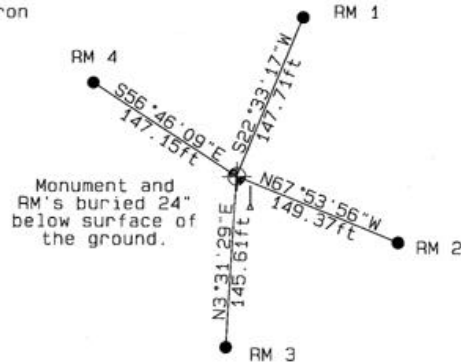
Monument and Accessories Found: ( condition and source )

Post or Stone not found. Fence line and corner was farmed in the late 1970's by the property owner. Monument location is in a plowed field. Terrain shows East - West berm and North - South berm intersection. Reestablished corner by Umatilla County Survey (I-25-B) 05-1974 D.Krumbein with corners 4N30A9, 4N31A5, 5N30V17.

DIAGRAM



- ◆ Set 2-3/8" dia. Brass cap on a 1-1/2" x 24" long Galvanized pipe monument.
- 5/8" dia. x 24" long Iron Rebar with a 2.0" dia. aluminum cap.
- ⊥ 5 ft steel T-Post with a Umatilla County Survey sign.



MONUMENT (S) AND ACCESSORIES SET (Procedures and Description)

Set a 2-3/8" dia. Brass Capped monument (stamped as shown) on a 1-1/4" ID x 30" long galvanized pipe 24" below the ground surface. Set a 5 ft steel T-Post with a Umatilla County Survey Marker sign facing North toward the monument.

REFERENCES SET:

Set four (5/8" dia x 24" long Iron rebar with a 2.0" dia. aluminum cap) 24" below the surface of the ground to the bearings and distances from monument shown above in the sketch.

Made GPS tie to TRI Stations LAURILA RESET RB 1379 and WALLS RB 1396	Oregon State Plane Coord. - North Zone
Latitude 45°51'50.104068"N	Northing 804552.71
Longitude 119°00'57.765028"W	Easting 8580129.02
NAD 83(1994)	Ortho Height 1074.97
	Ellipsoidal Height 1005.81

Compass Declination 18°E

Location and Comments

Proceed 2.1 miles South on Umatilla County Road 1172 (KOSMOS ROAD) Thence South along access road 1.00 miles to a ravine NorthEast and field access road. Thence 0.75 miles to a true East-West direction. Thence East 0.25 miles to the corner.

Surveyors Seal

REGISTERED PROFESSIONAL LAND SURVEYOR

*David L. Haddock*

OREGON JULY 12, 1968 DAVID L. HADDOCK 852

RECEIVED BY:

Firm / Agency

Date: 05-06  
 Rec'd By: \_\_\_\_\_  
 No.: 06-263-C

Haddock Surveying  
 P. O. Box 1574  
 Pendleton, OR 97801  
 (541) 276-2174

RENEWS 6-30-07