

OREGON CORNER RESTORATION FORM

Section 34 Township 5N Range 30E
 County Umatilla Date: 05-08-2006

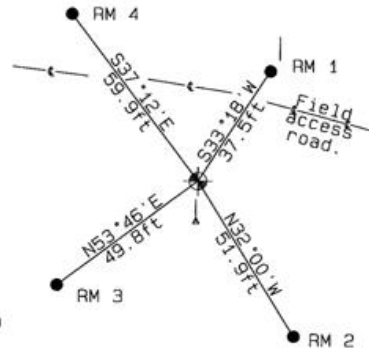
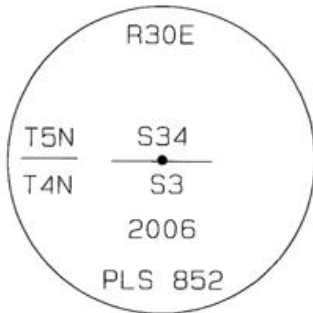
Corner Designation: 5N30E Z15
 _____ Condition Report Only
 _____ Not Found
 _____ Remonumented
 _____ Unrecorded
 _____ X _____ Surveyed In
 _____ X _____ Referenced Out

Previous Renewals / Surveys, etc.

02-1860 H.Maxon/J.Hurd STD PARALLEL (50) "West on South boundary of Sect. 34. Set post for 1/4 Sects, corner in mound of earth, trench & pits as per instructions."

Monument and Accessories Found: (condition and source)
 Post not found. Plowed field.

DIAGRAM



- ↖ Access Road centerline
- ⊕ Set 2-3/8" dia. Brass cap on a 1-1/2" x 30" long Galvanized pipe monument.
- ⊗ Wood fence post
- 5/8" dia. x 24" long Iron Rebar with a 1.3" dia. Red Plastic cap.
- | 6' Steel T-post with a Bearing Object sign.
- | Set 5' Steel T-Post with a Umatilla County Survey Sign.

MONUMENT (S) AND ACCESSORIES SET (Procedures and Description)

Set a 2-3/8" dia. Brass Capped monument (stamped as shown) on a 1-1/4" ID x 30" long galvanized pipe flush with the ground surface. Set a 5' Steel T-post with a Umatilla County Survey Marker sign facing North toward the monument.

REFERENCES SET:

Set four (5/8" dia x 24" long Iron rebar with a 1.3" dia. Red Plastic cap) to the bearings and distances from monument shown above in the sketch.

Made GPS tie to TRI Stations	Oregon State Plane Coord. - North Zone
LAURILA RESET RB 1379 and	Northing 804416.66
WALLS RB 1396	Easting 8572149.07
Latitude 45°51'50.192769"N	Ortho Height 888.84
Longitude 119°02'50.546092"W	Ellipsoidal Height 819.53
NAD 83 (1991)	

Compass Declination
 18°E

Location and Comments

Proceed 1.1 miles South on Umatilla County Road 1172 (KOSMOS ROAD). Turn South along access road East. Thence 0.15 miles to the South access road. Thence 0.1 miles to a West field access road. Thence West 0.48 miles to the monument.

Surveyors Seal

REGISTERED
 PROFESSIONAL
 LAND SURVEYOR

David L. Haddock

OREGON
 JULY 12, 1968
 DAVID L. HADDOCK
 852

RENEWS 6-30-07

RECEIVED BY:

Firm / Agency

Date: 05-06
 Rec'd By: _____
 No.: 06-263-C

Haddock Surveying
 P. O. Box 1574
 Pendleton, OR 97801
 (541) 276-2174