

OREGON CORNER RESTORATION FORM

Section 27.34 Township 5N Range 30E
 County Umatilla Date: 05-08-2006

Corner Designation: 5N30E V15

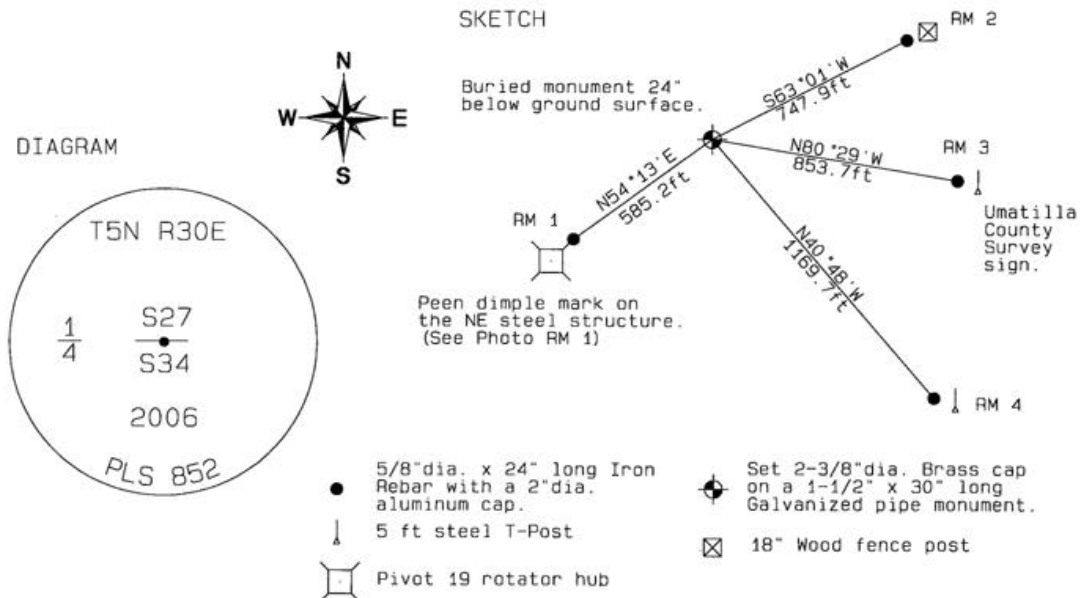
Condition Report Only
 Not Found _____
 Remonumented _____
 Unrecorded _____
 Surveyed In _____
 Referenced Out _____

Previous Renewals / Surveys, etc.

08-1861 D.Payne GLO (100) "Set Charred Stake with mound trench and pits"

Monument and Accessories Found: (condition and source)

This location has been plowed and filled for crops, all evidence of old monumentation is lost. Set corner monument in pivot circle.



MONUMENT (S) AND ACCESSORIES SET (Procedures and Description)

Set a 2-3/8" dia. Brass Capped monument (stamped as shown) on a 1-1/4" ID x 30" long galvanized pipe 24" below the ground surface. Set a 5 ft steel T-Post with a Umatilla County Survey Marker sign facing West toward the monument.

REFERENCES SET:

Set four (5/8" dia x 24" long Iron rebar with a 2" dia. Aluminum cap) to the bearings and distances from monument shown above in the sketch.

Made GPS tie to TRI Stations
 LAURILA RESET RB 1379 and
 WALLS RB 1396
 Latitude 45°52'42.302544"N
 Longitude 119°02'50.052045"W
 NAD 83 (1991)

Oregon State Plane Coord. - North Zone
 Northing 809694.72
 Easting 8572089.12
 Ortho Height 878.77
 Ellipsoidal Height 809.42

Location and Comments Compass Declination 18°E Surveyors Seal

A pivot layout map available from JSH Farms office located 1.5 miles SouthEast of HWY 37 and Walls road (County road 1258). Beginning 1.5 miles West of HWY 37 and the South Fork Cold Spring Road. Thence South on Umatilla County road 1172 (KOSMOS RD) 0.75 miles. Thence West through field access gate. Thence along the East then North access road of Pivot 23. Thence along the East access road of Pivot 19.

REGISTERED PROFESSIONAL LAND SURVEYOR

David L. Haddock

RECEIVED BY:

Firm / Agency

Date: 05-06

Rec'd By:

No.: 06-263-C

Haddock Surveying
 P. O. Box 1574
 Pendleton, OR 97801
 (541) 276-2174

OREGON
 JULY 12, 1968
 DAVID L. HADDOCK
 852

RENEWS 6-30-07