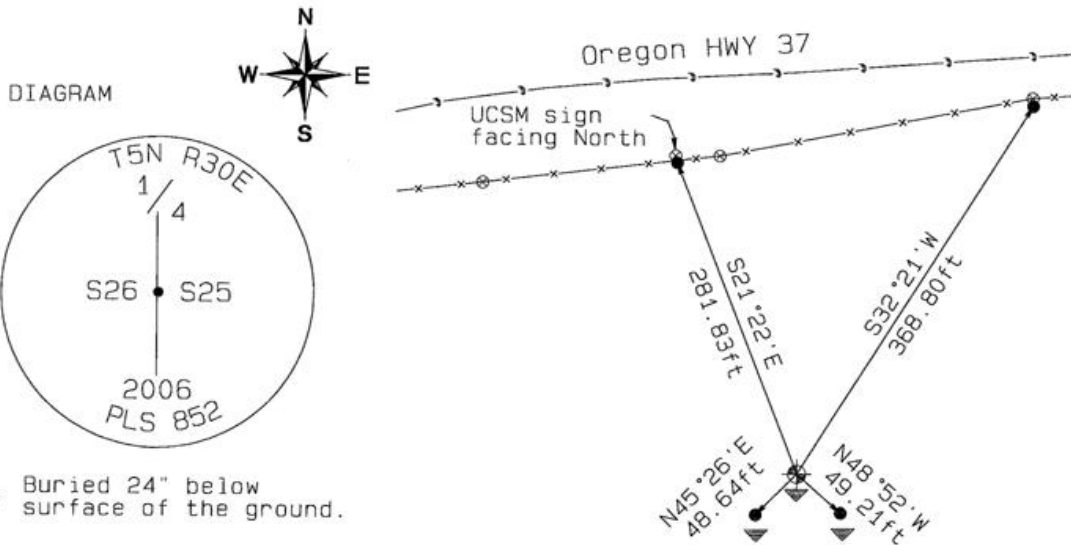


OREGON CORNER RESTORATION FORM

Section 26.25 Township 5N Range 30E
 County Umatilla Date: 09-01-2006 Condition Report Only
 Corner Designation: 5N30E T21 X Not Found
_____ Remonumented
_____ Unrecorded
X Surveyed In
X Referenced Out

Previous Renewals / Surveys, etc.
 08-1861 S. Payne - Subdv (100) "Set-charred stake with mound trench and pits as per instrs for 1/4 sec. corner."
 08-1934 ODOT J.A. Phelps (Dwg 5B-1-1) "Fc. Cor." corner indicated on map, 338.9 ft South from Hwy 37 and N/S section line intersection.
 10-1940 ODOT (Dwg 5B-29-11) "Fc. Cor." corner indicated on map, 338.9 ft South from Hwy 37 and N/S section line intersection.
 Monument and Accessories Found: (condition and source)

Searched for and did not find charred stake or fence corner.
Plowed field.



▼ Buried 24" below surface of the ground.

- ◆ Set 2-3/8" dia. Brass cap on a 1-1/2" x 30" long Galvanized pipe monument.
- 5/8" dia. x 30" long Iron Rebar with a 1.3" dia. Red plastic cap.

MONUMENT(S) AND ACCESSORIES SET (Procedures and Description)

Set a 2-3/8" dia. Brass Capped monument (stamped as shown) on a 1-1/4" ID x 30" long galvanized pipe 24" below the ground surface.
 Set a Umatilla County Survey Marker sign on the North RM wood fence post facing North toward Hwy 37.

REFERENCES SET:

Set four (5/8" dia x 30" long Iron rebar with a 1.3" dia. Red plastic cap) to the bearings and distances from monument shown above in the sketch.

| | |
|--|--|
| Made GPS tie to TRI Stations LAURILA RESET RB 1379 and WALLS RB 1396 | Oregon State Plane Coord. - North Zone |
| Latitude 45°53'08.52582"N | Northing 812496.81 |
| Longitude 119°00'56.47820"W | Easting 8580074.13 |
| NAD 83(1991) | Ortho Height 911.88 |
| | Ellipsoidal Height 842.65 |

Location and Comments Compass Declination 18°E Surveyors Seal

Proceed West from the junction of HWY 37 and South Cold Springs Highway approximately 0.63 miles. Located on the North side of the County Road.

REGISTERED
 PROFESSIONAL
 LAND SURVEYOR

RECEIVED BY:

Firm / Agency

Date 02-07
 Rec'd By: *[Signature]*
 No.: 07-11-B

Haddock Surveying
 P. O. Box 1574
 Pendleton, OR 97801
 (541) 276-2174

David L. Haddock

OREGON
 JULY 12, 1968
 DAVID L. HADDOCK
 852
 RENEWS 6-30-07