

OREGON CORNER RESTORATION FORM

Section 24, 25 Township 5N Range 30E
 County Umatilla Date: 05-08-2006

Corner Designation: 5N30E R24

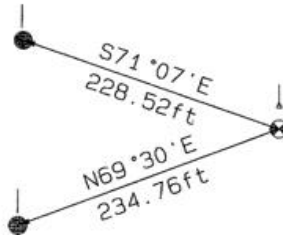
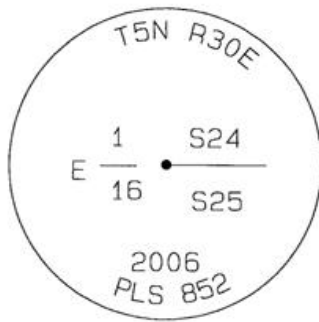
Condition Report Only
 Not Found
 Remonumented
 Unrecorded
 Surveyed In
 Referenced Out

Previous Renewals / Surveys, etc.

12-1861 S. Payne - Subdv (100) "Bearing only (1/16th corner not set)."
 06-1974 D. Krumbein (I-24-B) East-West line shown only (no location).
 06-1974 D. Krumbein (I-167-B) East-West line shown only (no location).
 12-1974 D. Krumbein (I-168-B) East-West line shown only (no location).
 06-1979 L. Jones (Q-1129-C) East-West line shown only (no location).

Monument and Accessories Found: (condition and source)
 Monument had not been set.

DIAGRAM



- ↓ 5' Steel T-post with a Umatilla County Survey Sign.
- ↓ 5' Steel T-post with a Bearing Object sign.
- Set 2"dia. Aluminum cap on a 5/8" x 30" long Iron Rebar.

- 5/8"dia. x 30" long Iron Rebar with a 1.3"dia. Red plastic cap.

MONUMENT(S) AND ACCESSORIES SET (Procedures and Description)

Set a 2"dia. Aluminum Cap (stamped as shown) on a 5/8"dia. x 30" long Iron Rebar 4" above the ground surface on a North face of a hillside. Set a 5' steel T-Post with a Umatilla County Survey Marker sign facing South 6 inches North of the corner.

REFERENCES SET:

Set two (5/8" dia x 30" long Iron rebar with a 1.3" dia. Red plastic cap) to the bearings and distances from monument shown above in the sketch.

Made GPS tie to TRI Stations	Oregon State Plane Coord. - North Zone
LAURILA RESET RB 1379 and	Northing 815165.82
WALLS RB 1396	Easting 8583918.35
Latitude 45°53'34.17279"N	Ortho Height 936.29
Longitude 119°00'1.44353"W	Ellipsoidal Height 867.11
NAD 83 (1991)	

Location and Comments

Compass Declination
18°E

Surveyors Seal

Proceed Northeast from the junction of HWY 37 and South Cold Springs Highway approximately 570 feet to the field access North. Thence Northeast 780 feet to the base of the North face hillside below the monument. Thence North 880 feet across the creek and up the hillside to the monument.

REGISTERED
PROFESSIONAL
LAND SURVEYOR

RECEIVED BY:

Firm / Agency

David L. Haddock

Date 02-07
 Rec'd By: *DHL*
 No.: 07-11-B

Haddock Surveying
 P. O. Box 1574
 Pendleton, OR 97801
 (541) 276-2174

OREGON
 JULY 12, 1968
 DAVID L. HADDOCK
 852

RENEWS 6-30-07