

OREGON CORNER RESTORATION FORM

SECTION 32 TOWNSHIP 5N RANGE 29E Z-9

COUNTY: UMATILLA DATE 4/90

CORNER DESIGNATION

Southeast Corner

- CONDITION REPORT ONLY
- NOT FOUND
- RENEWED
- UNRECORDED
- SURVEYED IN
- REFERENCED OUT

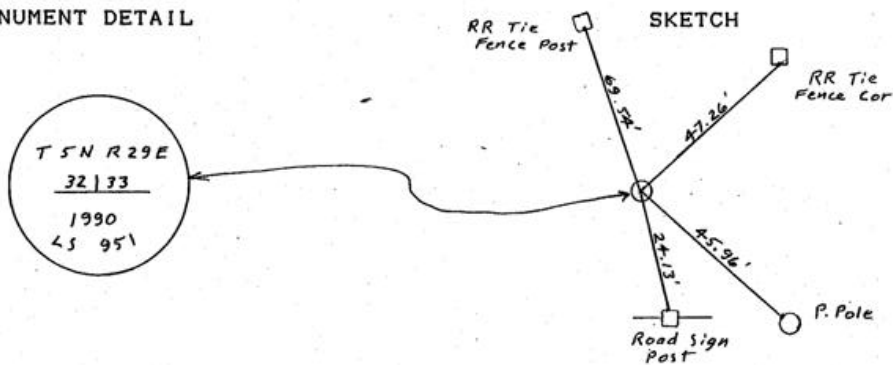
PREVIOUS RENEWALS/SURVEYS, ETC.

Originally surveyed by Davenport under contract #101 in 1861. Co. Surveyor Kimbrell did survey in 1913 (B 2, P 243). He was known to set 2" & 3" iron pipes.

MONUMENTS & ACCESSORIES FOUND: Condition and Source

Found 2" iron pipe 18" below surface of paved road.

MONUMENT DETAIL



MONUMENT SET (PROCEDURES AND DESCRIPTION)

Set 2 1/2" BC in 8" concrete over a 1/2" rebar which is driven inside the 2" iron pipe. Set it flush with pavement and it is stamped as above.

NEW ACCESSORIES

- from which
- alum. tag in RR tie FP bears N 47° 51' E 47.26 feet.
- alum. tag in P. pole bears S 49° 40' E 45.96 feet.
- alum. tag in County Rd. sign post bears S 14° E 24.13 ft.
- alum. tag in RR tie FP bears N 19° 03' W 69.54 feet.

LOCATION & COMMENTS

At intersection of Edwards Rd. North & Punkin Center Rd.

COMPASS DEC.
 FIRM EDWARDS SURVEYING
 P.O. BOX 763, HERMISTON,
 OREGON, 97838
 PARTY CHIEF D. EDWARDS
NOTES
 WITNESS J. COPPOCK

SURVEYOR'S SEAL

REGISTERED
 PROFESSIONAL
 LAND SURVEYOR

G. Dennis Edwards

OREGON
 JULY 16, 1971
 G. DENNIS EDWARDS
 951

90-38-A