

OREGON CORNER RESTORATION FORM

SECTION 32 TOWNSHIP 5N RANGE 29E Z-7

COUNTY: UMATILLA DATE 4/90

CORNER DESIGNATION

South 1/4 Corner

- CONDITION REPORT ONLY
- NOT FOUND
- RENEWED
- UNRECORDED
- SURVEYED IN
- REFERENCED OUT

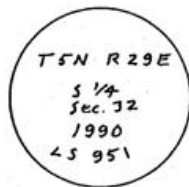
PREVIOUS RENEWALS/SURVEYS, ETC.

Originally surveyed by Davenport under contract #101 in 1861. Eriksen of G.L.O. surveyed Sect 32 in 1913 as did Kimbrell.

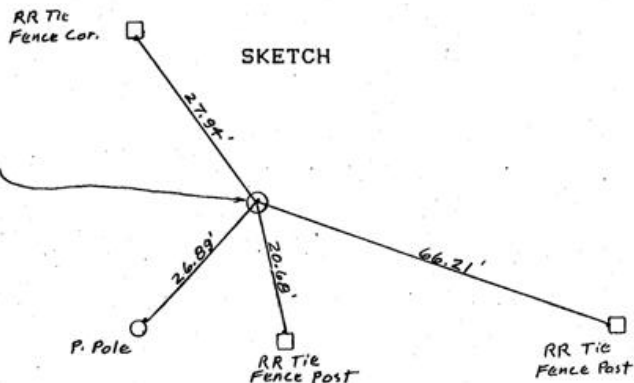
MONUMENTS & ACCESSORIES FOUND: Condition and Source

Found 1" bolt 1.4 feet below the surface of paved road.

MONUMENT DETAIL



SKETCH



MONUMENT SET (PROCEDURES AND DESCRIPTION)

Set 2 1/2" BC stamped as above over a 1/2" rebar which is over the 1" bolt. Set at the surface of paved road in concrete.

NEW ACCESSORIES

from which

- alum. tag in RR tie FP bears S71° 36' 20" E 66.21 feet
- alum. tag in RR tie FP bears S 2° E 20.68 feet.
- alum. tag in P pole bears S 42° 41' 20" W 26.89 feet.
- alum. tag in RR tie FP bears N 36° 23' W 27.94 feet.

LOCATION & COMMENTS

At the intersection of Punkin Center Rd. with Cabana Rd.

SURVEYOR'S SEAL

COMPASS DEC.
 FIRM EDWARDS SURVEYING
 P.O. BOX 763, HERMISTON,
 OREGON, 97838
 PARTY CHIEF D. EDWARDS
NOTES
 WITNESS J. COPPOCK

**REGISTERED
 PROFESSIONAL
 LAND SURVEYOR**

G. Dennis Edwards

OREGON
 JULY 16, 1871
 G. DENNIS EDWARDS
 951

90-38-A