

OREGON CORNER RESTORATION FORM

SECTION:19 TOWNSHIP: 5N

RANGE: 29E

P-5

COUNTY: UMATILLA

DATE: 12/05

CORNER DESIGNATION

E1/4 Section 19

- CONDITION REPORT ONLY
- NOT FOUND
- RENEWED
- UNRECORDED
- SURVEYED IN
- REFERENCED OUT

PREVIOUS RENEWALS/SURVEYS ETC.

Originally surveyed by Davenport under Contract # 101 in 1861. He set post and made mound.

In 1995 Rogers set an aluminum cap

In 1988 Roberts set a 1"x30" iron pipe with a 2 3/8" brass cap

MONUMENTS AND ACCESSORIES FOUND: CONDITION AND SOURCE

Found 2 3/8" brass cap stamped below, 6" below the surface.

W.C. 5/8" iron rebar with plastic cap 2627 bears N 30° 45' 29" E 60.55' (60.52')

W.C. 5/8" iron rebar with plastic cap 2627 bears N 18° 43' 43" W 54.36' (54.33')

W.C. 5/8" iron rebar with plastic cap 2627 bears S 40° 24' 51" W 14.41' (14.49')

W.C. 5/8" iron rebar with plastic cap 2627 bears S 38° 16' 32" E 11.58' (11.64')

MONUMENT DETAIL

T5NR29E

1/4

S19 S20

1998

L.S. 2629

OREGON STATE PLANE COORDINATES, NORTH ZONE, NAD 83(91) INT. FEET:

817010.18

8526962.43

MONUMENT SET (PROCEDURES AND DESCRIPTION)

NEW ACCESSORIES FROM WHICH

LOCATION AND COMMENTS

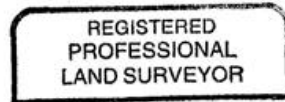
At the intersection of Purdy Rd & Craig Rd .

Corner lies South & West of intersection.

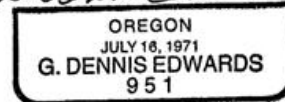
SURVEYOR'S SEAL

FIRM: EDWARDS SURVEYING LLC
PO BOX 763 - HERMISTON OR 97838

PARTY CHIEF: R. SMITH
WITNESS: J. JOSEPH



G. Dennis Edwards



RENEWS 12/31/05