

OREGON CORNER RESTORATION FORM

Z-13

Section 34 Township 5N Range 28E

County UMATILLA Date 11/95

CORNER DESIGNATION

S.W. COR

- Condition Report Only
- Not Found
- Renewed
- Unrecorded
- Surveyed In
- Referenced Out

Previous Renewals/Surveys, etc. ORIG. SUR 1st 1860 - HAFT CONT # 93

KIMBRELL SET 2 1/2" I. Pipe 1910

KRUMBEIN REPLACED 2 1/2" I. Pipe with 1" I. Pipe & 2 1/2" B.C.

Monument(s) & Accessories Found: (Condition and Source)

End 5/8" rebar with 2" Alum cap Initial PT. "EDGEMOOR"

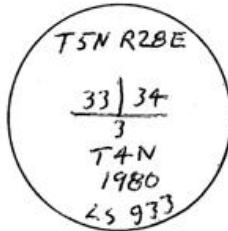
N 45° 05' 52" E 46.51 Feet from Cor.

End 5/8" rebar N 89° 54' 36" W 33.04 from Cor.

End Krumbein's 1" I.P. with B.C. lying on the ground by a fence post.

Monument Detail

Sketch



Monument Set (Procedures and Description)

Reset Krumbein's B.C. from ties to two of my End 5/8" Rebar

SEE MY SURVEY FOR COLUCCIO

New Accessories

A 1" x 18" I Pipe with 2 3/8" B.C. Bears 50° 06' 24" E 33.00 FT.

An Alum Tag # 951 in RR Tie F.P. Bears N 43° 29' 20" W 60.63 FT

Location & Comments

At the intersection Compass Declination _____

of PUNKIN CENTER RD Firm/Agency EDWARDS

& Sunshine LN SURVEYING

Address P.O. Box 763

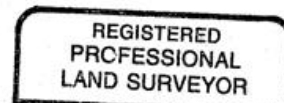
HERMISTON, OR 97038

Party Chief D. EDWARDS

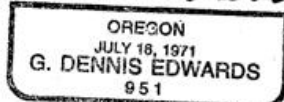
Notes _____

Witness J. COPPOCK

Surveyor's Seal



J. Dennis Edwards



RENEWS 12/31/95

09-40-A