

OREGON CORNER RESTORATION FORM

SECTION 29 TOWNSHIP 5N RANGE 28E V-5

COUNTY: UMATILLA DATE 1/90

CORNER DESIGNATION

SW Corner

- CONDITION REPORT ONLY
- NOT FOUND
- RENEWED
- UNRECORDED
- SURVEYED IN
- REFERENCED OUT

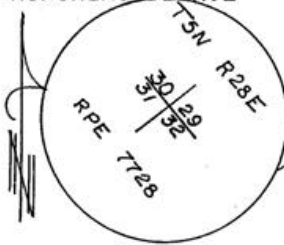
PREVIOUS RENEWALS/SURVEYS, ETC.

Original survey by Davenport in 1861, under Contract #101.

MONUMENTS & ACCESSORIES FOUND: Condition and Source

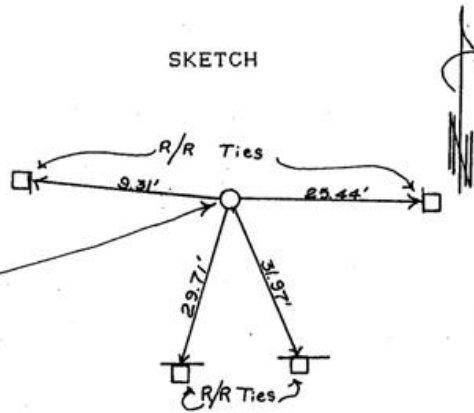
Found a 2 3/8" Brass Cap stamped as shown below.  
KRUMBEIN 1973.

MONUMENT DETAIL



Yes; As Shown

SKETCH



MONUMENT SET (PROCEDURES AND DESCRIPTION)

NEW ACCESSORIES

- A R/R tie w/Alum. Tag #951, N 89° 49' 20" E 25.44 feet.
- A R/R " w/ " " " S 24° 29' 40" E 31.97 feet.
- A " " w/ " " " S 15° 14' 10" W 29.71 feet.
- A " " w/ " " " N 85° 33' 30" W 9.31 feet.

Bearing Object signs attached to all accessories.

All Distances to Alum. Tags

LOCATION & COMMENTS

From Intersection of Powerline Rd. and I-82 go North on Powerline 0.7 mi. to a gravel rd. to the West, go West along gravel rd. abt. 0.25 mi. to corner.

COMPASS DEC.  
 FIRM EDWARDS SURVEYING  
 P.O. BOX 763, HERMISTON,  
 OREGON, 97838  
 PARTY CHIEF D. EDWARDS  
 NOTES  
 WITNESS J. COPPOCK

SURVEYOR'S SEAL

REGISTERED  
 PROFESSIONAL  
 LAND SURVEYOR

*D. Dennis Edwards*

OREGON  
 JULY 16, 1971  
 G. DENNIS EDWARDS  
 951

RECEIVED BY

Umatilla County Surveyor

Date 1-91

Rec'd By KA

No. 91-01-B