

OREGON CORNER RESTORATION FORM

SECTION 28 TOWNSHIP 5N RANGE 28E V-11

COUNTY: UMATILLA DATE 4/90

CORNER DESIGNATION

S 1/4 Corner

CONDITION REPORT ONLY

- NOT FOUND
- RENEWED
- UNRECORDED
- SURVEYED IN
- REFERENCED OUT

PREVIOUS RENEWALS/SURVEYS, ETC.

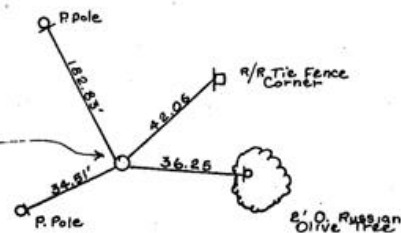
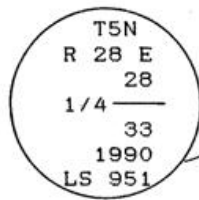
Originally surveyed in 1861 by Davenport under Contract #101. In 1917, in a supplemental plat, Eriksen found a monument.

MONUMENTS & ACCESSORIES FOUND: Condition and Source

Found a 1 1/2" I.D. Iron pipe 5" below the surface of paved road. Probably from Eriksen 1917 survey.

MONUMENT DETAIL

SKETCH



MONUMENT SET (PROCEDURES AND DESCRIPTION)

Drove a 5/8" x 30" rebar inside the 1 1/2" Iron pipe and set 2 1/2" Brass Cap in concrete at surface of paved road, stamped as above.

NEW ACCESSORIES

From which

an Alum tag #951 in RR tie fencepost Bears N47° 12'E 42.06 feet,

Alum. tag #951 in 2" Russian Olive tree Bears N86° 32'E 36.25 feet,

Alum. tag #951 in power pole Bears S60° 23' 30"W 34.51 feet.

Alum. tag #951 in power pole Bears N11° 02'W 182.83 feet.

Attached Bearing Object, Witness Cor. signs to all accessories except for Bearing Object sign only in the tree.

LOCATION & COMMENTS

At angle point in Cooney Lane.

SURVEYOR'S SEAL

COMPASS DEC.  
 FIRM EDWARDS SURVEYING  
 P.O. BOX 763, HERMISTON,  
 OREGON, 97838  
 PARTY CHIEF D. EDWARDS  
 NOTES  
 WITNESS J. COPPOCK

**REGISTERED  
 PROFESSIONAL  
 LAND SURVEYOR**

*J. Dennis Edwards*

OREGON  
 JULY 16, 1871  
**G. DENNIS EDWARDS**  
 951

**RECEIVED BY**

Umatilla County Surveyor

Date 1-91  
 Rec'd By [Signature]  
 No. 91-01-B