

OREGON CORNER RESTORATION FORM

SECTION 30 TOWNSHIP 5N RANGE 28E V-1

COUNTY: UMATILLA DATE 4/90

CORNER DESIGNATION

SW Corner

- CONDITION REPORT ONLY
- NOT FOUND
- RENEWED
- UNRECORDED
- SURVEYED IN
- REFERENCED OUT

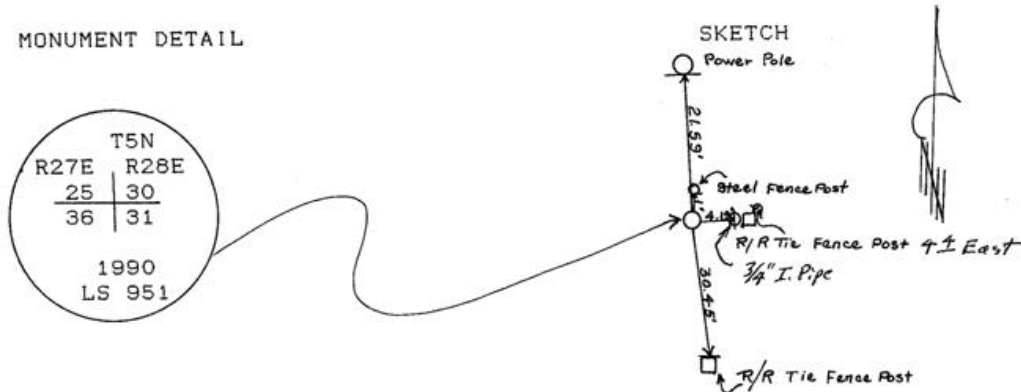
PREVIOUS RENEWALS/SURVEYS, ETC.

Originally surveyed by Davenport in 1861 under Contract #101.

MONUMENTS & ACCESSORIES FOUND: Condition and Source

Found 3/4" I.D. Iron pipe N86° 10'E 4.19 feet from corner.  
No record.

MONUMENT DETAIL



MONUMENT SET (PROCEDURES AND DESCRIPTION)

Set 1" x 30" Iron pipe with 2 3/8" Brass Cap stamped as above by single proportion. See Area One 1989 Umatilla Survey.

NEW ACCESSORIES

From which  
 Alum. tag #951 in power pole Bears. N3° 10'W 21.59 feet,  
 a steel fence post Bears. North 1.0 feet,  
 the face of a RR tie fence post Bears. N86°E 4.4 feet,  
 Alum. tag #951 in RR tie fence post Bears. S8° 26'E 30.45 feet.  
 Bearing Object & Witness Cor. signs attached to all accessories.

LOCATION & COMMENTS

From intersection of I 82 with Power Line Rd., go North 0.8 miles to gravel rd. on West. Go West on gravel road 1.25 miles to corner.

RECEIVED BY

Umatilla County Surveyor  
 Date 1-91  
 Rec'd By KA  
 No. 91-01-B

COMPASS DEC.  
 FIRM EDWARDS SURVEYING  
 P.O. BOX 763, HERMISTON,  
 OREGON, 97838  
 PARTY CHIEF D. EDWARDS  
 NOTES  
 WITNESS J. COPPOCK

SURVEYOR'S SEAL

REGISTERED  
 PROFESSIONAL  
 LAND SURVEYOR

*D. Dennis Edwards*

OREGON  
 JULY 16, 1871  
 G. DENNIS EDWARDS  
 951