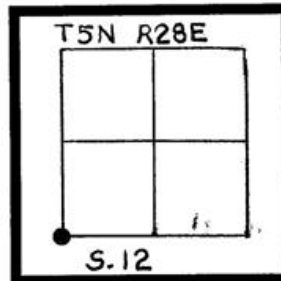


HISTORY OF ORIGINAL CORNER ESTABLISHMENT:

This area was originally surveyed by Timothy Davenport in September 1861 under Contract No. 101 with the General Land Office. At this corner he "set post, made mound, and set charred stake as per instruction". No original evidence was found.

In 1988, Dennis Edwards, OPLS 951, found a U.S. Brass Cap with no date set in concrete.

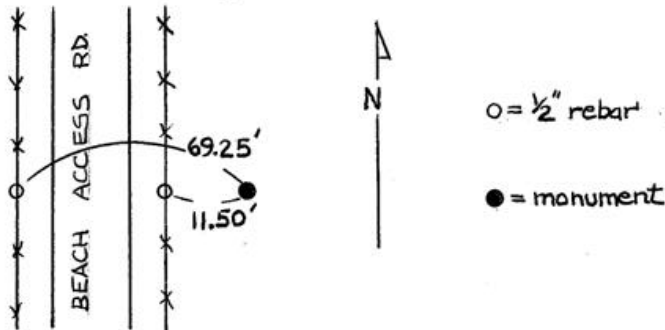


DIAGRAM

DESCRIPTION OF CORNER EVIDENCE FOUND:

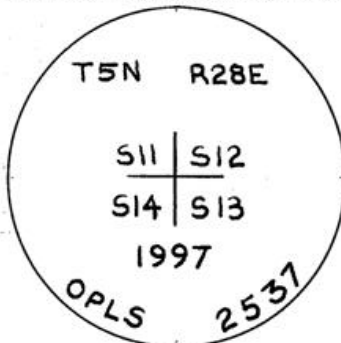
An 8-inch diameter concrete cylinder with top broken off was found at the corner position.

Two 1/2" rebars without caps on either side of Beach Access Road as set by Dennis Edwards, Umatilla County Survey 88-45-C.



DESCRIPTION OF MONUMENT AND ACCESSORIES I ESTABLISHED TO PERPETUATE THE ORIGINAL LOCATION OF THIS CORNER:

A hole was drilled in existing concrete and a 3-inch brass disk with 2-inch stem was epoxied into hole.



I hereby certify that the above corner point was perpetuated as hereon described on May 12, 1997

Witnesses: Pete Elder, LSIT

RECEIVED BY
Umatilla County Surveyor
Date 7-97
Rec'd By AK
No. 97-130-R

REGISTERED PROFESSIONAL LAND SURVEYOR

W. M. [Signature]

OREGON
JAN. 21, 1992
HARMON E. McLENDON
2537

Renews 12/31/98