

OREGON CORNER RESTORATION FORM

SECTION 33 TOWNSHIP 5 NORTH RANGE 27 EAST
 COUNTY : UMATILLA DATE 5/06

Z-13

CORNER DESIGNATION

SE CORNER SECTION 33 STANDARD CORNER

CONDITION REPORT ONLY
 NOT FOUND
 RENEWED
 UNCOVERED
 SURVEYED IN
 REFERENCED

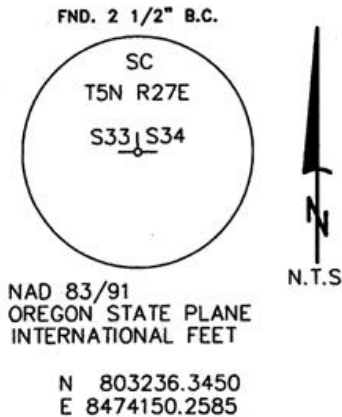
PREVIOUS RENEWALS / SURVEYS, ETC.

ORIGINAL GLO SURVEY BY DAVENPORT UNDER CONTRACT #101 IN 1861. SET POST WITH MOUND AND CHARRED STAKE.
 DEPENDENT RESURVEY BY GOULD OF THE FIRST STANDARD PARALLEL NORTH, THROUGH RANGE 27 EAST AND EAST BOUNDARY OF T.4N. R.27E.W.M. 1941
 STAEBLER FOR STONE 1972 SURVEY NO. H-106-B

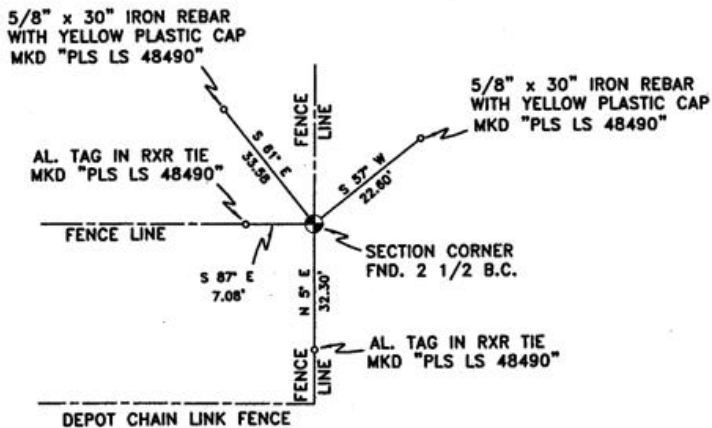
MONUMENTS AND ACCESSORIES FOUND: CONDITION AND SOURCE

2 1/2" B.C. SECTION CORNER STANDARD CORNER

MONUMENT DETAIL



SKETCH



MONUMENT SET (PROCEDURES AND DESCRIPTION)

NEW ACCESSORIES FROM WHICH

A 5/8" x 30" IRON REBAR WITH A YELLOW PLASTIC CAP MKD "PLS LS 48490" LIES N 57° E, 22.60 FEET.
 A 5/8" x 30" IRON REBAR WITH A YELLOW PLASTIC CAP MKD "PLS LS 48490" LIES N 61° W, 33.58 FEET.
 AN ALUMINUM TAG "PLS LS 48490" ON A RXR TIE LIES N 87° W, 7.08 FEET.
 AN ALUMINUM TAG "PLS LS 48490" ON A RXR TIE LIES S 5° W, 32.30 FEET.

LOCATION AND COMMENTS

FROM THE INTERSECTION OF HWY. 730 AND PLEASANT VIEW ROAD GO SOUTH ON PLEASANT VIEW ROAD +/- 2000' ACROSS CANAL, CONTINUE SOUTH TO WHERE POWER LINE RUNS IN A E-W DIRECTION AND N. DIRECTION, CONTINUE GOING SOUTH 1 MILE TO NORTH FENCE LINE OF UMATILLA DEPOT AND CORNER. CORNER FALLS +/- 50' NORTH OF FENCE LINE IN A N-S FENCE.

COMPASS DEC.

17.5 DEG EAST

FIRM/AGENCY

PRIMM LAND SURVEYING LLC
 1340 N.E. 4TH P.O. BOX 1322
 HERMISTON, OREGON 97838

PARTY CHIEF

BRIT L. PRIMM

NOTES

WITNESS

KEITH P. PRIMM
 JOE L. PRIMM

SURVEYOR'S SEAL

REGISTERED
 PROFESSIONAL
 LAND SURVEYOR

Keith P. Primm
 OREGON
 JULY 12, 2005
 KEITH P. PRIMM
 48490

EXPIRATION DATE: 12/31/06

06-461-B