

# OREGON CORNER RESTORATION FORM

SECTION 16 TOWNSHIP 5 NORTH RANGE 27 EAST  
 COUNTY : UMATILLA DATE 5/06

N-13

CORNER DESIGNATION

SE CORNER SECTION 16

CONDITION REPORT ONLY  
 NOT FOUND  
 RENEWED  
 UNCOVERED  
 SURVEYED IN  
 REFERENCED

PREVIOUS RENEWALS / SURVEYS, ETC.

ORIGINAL GLO SURVEY BY DAVENPORT UNDER CONTRACT #101 IN 1861. SET POST WITH MOUND AND CHARRED STAKE.

TOMPSON FOR SIMMONS 1967 SURVEY NO. D-43-AX

EDWARDS FOR SWANSON 1977 SURVEY NO. N-7-B

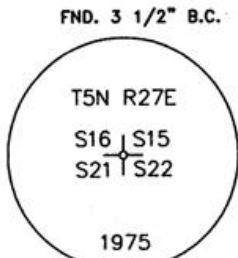
WELLS FOR MUNSEY 1998 SURVEY NO. 98-245-B

STAEBLER FOR STONE 1972 SURVEY NO. H-106-B

MONUMENTS AND ACCESSORIES FOUND: CONDITION AND SOURCE

3 1/2" B.C. SECTION CORNER STAMPED 1975

MONUMENT DETAIL

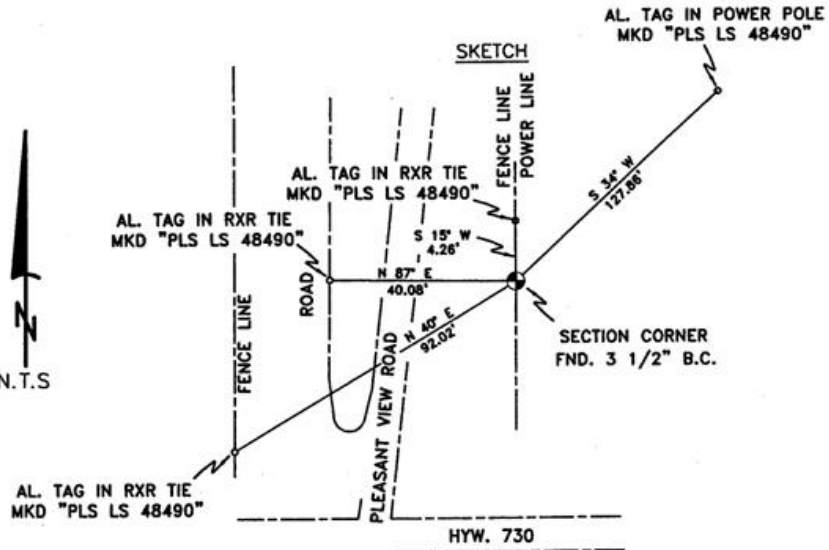


NAD 83/91  
 OREGON STATE PLANE  
 INTERNATIONAL FEET

N 819023.5504  
 E 8473922.8712

N.T.S

SKETCH



MONUMENT SET ( PROCEDURES AND DESCRIPTION )

NEW ACCESSORIES FROM WHICH

- AN ALUMINUM TAG "PLS LS 48490" ON A POWER POLE LIES N 34' E, 127.86 FEET.
- AN ALUMINUM TAG "PLS LS 48490" ON A RXR TIE LIES S 40' W, 92.02 FEET.
- AN ALUMINUM TAG "PLS LS 48490" ON A RXR TIE LIES S 87' W, 40.08 FEET.
- AN ALUMINUM TAG "PLS LS 48490" ON A RXR TIE LIES N 15' E, 4.26 FEET.

LOCATION AND COMMENTS

FROM THE INTERSECTION OF HWY. 730 AND PLEASANT VIEW ROAD, GO NORTH +/- 300' TO CORNER ON EAST SIDE OF PLEASANT VIEW ROAD.

COMPASS DEC.

17.5 DEG EAST

FIRM/AGENCY

PRIMM LAND SURVEYING LLC  
 1340 N.E. 4TH P.O. BOX 1322  
 HERMISTON, OREGON 97838

PARTY CHIEF

BRIT L. PRIMM

NOTES

WITNESS

KEITH P. PRIMM  
 JOE L. PRIMM

SURVEYOR'S SEAL

REGISTERED  
 PROFESSIONAL  
 LAND SURVEYOR

*Keith P. Primm*

OREGON  
 JULY 12, 2005  
 KEITH P. PRIMM  
 48490

EXPIRATION DATE: 12/31/06

06-461-B