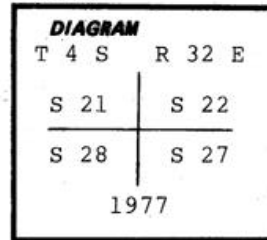


**CERTIFIED RECORD OF LAND CORNER MONUMENTATION**

R-13

**History of original corner establishment:**

Corner originally established by George S. Pershin, U.S. Deputy Surveyor, under Contract No. 390, dated May 12, 1881. Surveyor General records state: Set basalt stone 16x12x7 on slight N.W. slope in edge of timber for cor. to Sec. 21, 22, 28 & 27. A pine 10 ins di brs N36°E, 170 lks dist. A pipe 12 ins di brs S78°E, 146 lks dist. A pipe 5 ins di brs S16°W, 196 lks dist. A pine 28 ins di brs N40°W, 11 lks dist.



Corner remonumented by Craig L. Wanless, BLM Cadastral Surveyor under instructions dated July 18, 1977. His record states: The cor. of secs 21, 22, 27 & 28, monumented with the original unmarked basalt stone, 16x12x7 ins, firmly set 6 ins. in the ground, and in a mound of stone 2 ft. base, 6 ins. high, from which the remains of the original bearing trees: A pine 19 ins diam. bears N36°E, 170 lks dist. with fragmentary scribe marks visible on open blaze. A pine 26 ins. diam. bears S78°E, 146 lks. dist. with healed blaze. A pipe 24 ins. diam bears S20½°W, 196 lks. dist. with healed blaze (record S16°W). A root hole brs N40°W, 11 lks. dist. with a down decayed pine alongside, size indeterminate, ~~no marks visible.~~ At the corner point... Set an iron post, 28 ins long, 2½ ins. diam. 24 ins. in the ground and in a mound of stone, 2 ft. base, to top, with brass cap mkd. (as shown in corner diagram) from which a new bearing tree... A ponderosa pine, 21 ins. dia. bears N19°W, 68 lks. dist. mkd. T4SR32ES21 BT. Deposit corner stone alongside iron post.

**Description of corner evidence found:**

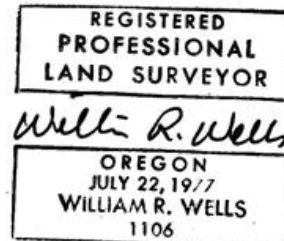
Found 2½" iron pipe with 3¼" brass cap (as shown in corner diagram) in mound of stone.

- A 20" ponderosa pine brs N36°E, 111.9' with healed blaze.
- A 27" ponderosa pine sawn stump about 7' high bears S80½°E, 97.0' with healed blaze.
- A 26" ponderosa pine brs S19½°W, 129.4' with healed blaze.
- A 22" ponderosa pine brs N20½°W, 44.9' with scribing visible.
- Decayed ponderosa pine root wad on ground brs N40°W, 7.8', no marks.

**Description of monument and accessories | established to perpetuate the original location of this corner:**

Set steel fence post next to corner with sign 54-9 & 54-2 attached.  
 New bearing tree established:  
 A 17" ponderosa pine brs S9°E, 58.3' dist scribed T4SR32ES27 BT.  
 New BT has a brass washer stamped PLS 1106 nailed to face of blaze.  
 Attached sign 54-3 & 54-9, painted face of blaze & a 6" red band around each BT.  
 Compass declination 18° East.

I hereby certify that the above corner monument was properly maintained to U.S.F.S. standards by me on June 02, 1992.



Office of...County Surveyor..... County of...Umatilla.....  
 State of...Oregon....., I hereby certify that the within instrument was filed in this office  
 for record on the..... day of....., 19.....  
 ..... by .....  
 (COUNTY OFFICIAL)

R-13

Form R6-7100-57 (9/71)

**RECEIVED BY**

Umatilla County Surveyor

Date 7-92

Rec'd By JK

No. 92-80-B

★ OPC-798-276