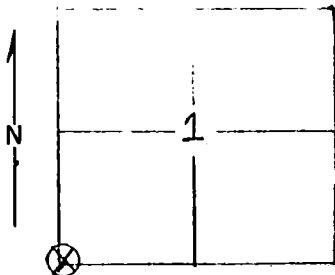


Tract or Survey No. \_\_\_\_\_ Cor. No. E-21  
 (Ref. FSM 7151.4)  
 T. 4S R. 32E R.D. Ukiah County Umatilla  
 M. Will N.F. Umatilla State Oregon

## CORNER DIAGRAM



## DESCRIBE CORNER MONUMENT FOUND

A stone 14"x10"x4" all above ground. It was in good condition. No markings. Painted this stone red.

## DESCRIBE BEARING TREES OR OTHER OFFICIAL ACCESSORIES FOUND

A ponderosa pine 22.5" DBH bearing N67°E 122 lks. distance has good scribing visible. Is vigorous. A ponderosa pine 17.4" DBH bearing S28°W from corner. 225 lks. has good telltale scar on it. Is in fair condition. Both trees are painted with 6" red band. Scars and scribing is painted red also. A pine snag that has been burned has a face on it indicating other b.t. Did nothing with this snag as there was nothing more than a chopped out face that

## DESCRIBE CORNER LOCATION RELATIVE TO NEAR-BY FEATURES, ALSO HOW TO REACH CORNER

## PHOTO IDENTIFICATION DATA

Photo No. \_\_\_\_\_  
 Filed At. \_\_\_\_\_  
 Object Ident. \_\_\_\_\_  
 Ident. By \_\_\_\_\_  
*Signature*

## PLANE COORDINATE POSITION DATA

State \_\_\_\_\_ Zone \_\_\_\_\_  
 X \_\_\_\_\_  
 Y \_\_\_\_\_  
 Estab. By \_\_\_\_\_  
*Agency*

Signature  
MLCTitle  
For TechDivision  
USFSHeadquarters  
UkiahDate  
6/27/77

7100-52 (3/68)

5