

Index File No. V-25

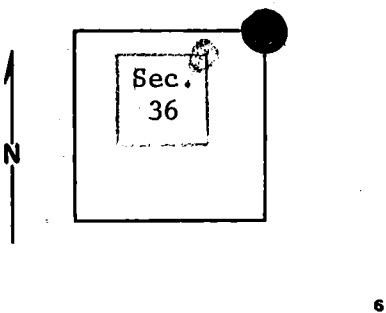
**CORNER RECORD (SEARCH)**  
(Ref. FSM 7151.4)

Tract or Survey No. \_\_\_\_\_ Cor. No. \_\_\_\_\_

T 4 S. R. 29 E. R.D. Ukiah County Morrow & Umatilla County Line

Merid. Willamette N.F. Umatilla State Oregon

**CORNER DIAGRAM**



**DESCRIBE CORNER MONUMENT FOUND**

*Brass Cap! see Monumentation File*

**DESCRIBE BEARING TREES OR OTHER OFFICIAL ACCESSORIES FOUND**

12" L.P. pine with blaze on NW side of tree. Scribing plain to see. (T4S, R30/S31 B.T.)  
F.S. location poster

**PHOTO IDENTIFICATION DATA**

Photo No. \_\_\_\_\_  
Filed At. \_\_\_\_\_  
Object Ident. \_\_\_\_\_  
Ident. By \_\_\_\_\_  
*Signature*

**DESCRIBE CORNER LOCATION RELATIVE TO NEAR-BY FEATURES, ALSO HOW TO REACH CORNER**

From New Western Route Road, proceed about 1.3 miles up old road on westerly side of Five Mile Creek to end of road. B.T. is about 60 feet southerly from end of road. Logging slash where corner should be.

**PLANE COORDINATE POSITION DATA**

State \_\_\_\_\_ Zone \_\_\_\_\_  
X \_\_\_\_\_  
Y \_\_\_\_\_  
Estab. By \_\_\_\_\_  
*Agency*

Signature <u>B. Moore</u>	Title <u>Eng, Tech.</u>	Division <u>Umatilla</u>	Headquarters <u>S.O.</u>	Date <u>7/73</u>	7100-52-(3/68)
------------------------------	----------------------------	-----------------------------	-----------------------------	---------------------	----------------

CORNER RECORD (PERPETUATION)

MONUMENT: DESCRIBE NEW MONUMENT SET, OR WORK DONE TO PRESERVE EXISTING MONUMENT

ACCESSORIES : DESCRIBE NEW BT'S WITNESS OBJECTS ETC. ESTABLISHED, OR WORK DONE TO PRESERVE EXISTING EVIDENCE

Work Done By \_\_\_\_\_ Title \_\_\_\_\_ Date \_\_\_\_\_ State Registration No. or Agency \_\_\_\_\_

Certified Cor. Record Prepared ? Yes No Filed At: \_\_\_\_\_ Date \_\_\_\_\_

REMARKS

Index File No. V-25 T. R. M. Tract or Surv. No. Cor.

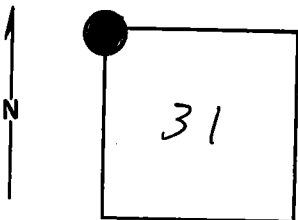
Index  
File No. V-1

**CORNER RECORD (SEARCH)**  
(Ref. FSM 7151.4)

Tract or  
Survey No. \_\_\_\_\_ Cor.  
No. V-1

T 4S R. 30E R.D. \_\_\_\_\_ County \_\_\_\_\_  
Merid. \_\_\_\_\_ N.F. \_\_\_\_\_ State \_\_\_\_\_

**CORNER DIAGRAM**



**DESCRIBE CORNER MONUMENT FOUND**

CR T4S R29E V-25  
Brass Cap: See Monumentation File

**DESCRIBE BEARING TREES OR OTHER OFFICIAL ACCESSORIES FOUND**

**PHOTO IDENTIFICATION DATA**

Photo No. \_\_\_\_\_  
Filed At. \_\_\_\_\_  
Object Ident. \_\_\_\_\_  
Ident. By \_\_\_\_\_  
*Signature*

**DESCRIBE CORNER LOCATION RELATIVE TO NEAR-BY FEATURES, ALSO HOW TO REACH CORNER**

**PLANE COORDINATE POSITION DATA**

State \_\_\_\_\_ Zone \_\_\_\_\_  
X \_\_\_\_\_  
Y \_\_\_\_\_  
Estab. By \_\_\_\_\_  
*Agency*

Signature

Title

Division

Headquarters

Date

7100-52-(3/68)

**CORNER RECORD (PERPETUATION)**

**MONUMENT : DESCRIBE NEW MONUMENT SET, OR WORK DONE TO PRESERVE EXISTING MONUMENT**

**ACCESSORIES : DESCRIBE NEW BT'S WITNESS OBJECTS ETC. ESTABLISHED, OR WORK DONE TO PRESERVE EXISTING EVIDENCE**

Work Done By \_\_\_\_\_ Title \_\_\_\_\_ Date \_\_\_\_\_ State Registration No. or Agency \_\_\_\_\_

Certified Cor. Record Prepared ? Yes No Filed At: \_\_\_\_\_ Date \_\_\_\_\_

**REMARKS**

Index File No. T. R. M. Tract or Surv. No. Cor. \_\_\_\_\_