

CERTIFIED RECORD OF LAND CORNER MONUMENTATION

History of original corner establishment:

Corner established in 1883 by General Land Office.
(Contract Survey)

Original survey record states: Set a basalt stone

15 x 10 x 5 ins., 10 ins. in the ground for 1/4

Sec. Cor., marked 1/4 on N. face; from which

A fir, 18 ins. in diam. brs. N. 5° W., 73 lks. dist., marked

1/4 S 7 B T and raised a mound of stone, 2 ft. base 1 ft. and a

half high N. of Cor.



J-3

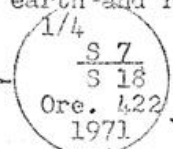
Description of corner evidence found:

Found a stone 10"x 5" projecting about 5", marked 1/4 on the north face, just south of a mound of stones. From this corner, at the record distance and bearing, I found a dead fir tree, 20" in diameter and blazed and scribed 1/4 S 7 B T, fallen down hill.

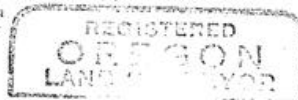
Description of monument and accessories I established to perpetuate the original location of this corner

At the location of the stone marked 1/4 on the north face, I set a 2" diameter pipe 36" long, flared on the bottom, with a 3" bronze disk brazed to the top 20" in the ground. I placed the original stone in the hole beside the pipe and backfilled with earth and rocks.

I stamped the disk thus: →



From the new monument, a red fir 14" in diameter bears N. 45° E. 32 ft. distant which I established for a new bearing tree. I blazed the tree and marked it 1/4 S 7 B T. and attached a USFS bearing tree tag and a location poster. I established another bearing tree: a red fir 44" in diameter bears S. 43° W. at 150 ft. distant and 75 feet lower than the corner. I blazed and marked it 1/4 S 18 B T at the base, and attached a Bearing Tree poster and a USFS warning poster.



A. J. Lommasson
OCTOBER 4, 1957
A. J. LOMMASSON
422

Office of County Surveyor County of Umatilla
Oregon
State of Oregon, I hereby certify that the within instrument was filed in this office
for record on the fourth day of September, 1957, at 2:30 o'clock P.m., (signed)
A. J. Lommasson by _____
(COUNTY OFFICIAL) (DEPUTY)