

OREGON CORNER RESTORATION FORM

Section: 15

Township: 4N

Range: 37 EWM

County: Umatilla

Date: 08/22/00

Corner Designation: L-17, East 1/4 corner of Section 15 only.

Previous Renewals/Surveys, etc.: This corner was originally set by U.S. Deputy surveyors, Charles L. and William C. Campbell, under Contract No. 733. Dated March 22, 1901. The Surveyor Generals notes state: "Set and ironstone 20 x 15 x 6 ins. 10 ins. in the ground, struck rock, raised mound of stone for 1/4 sec. cor., marked 1/4 on the W. face, raised mound of stone 3 ft. base, 2 ft. high W. of cor. pits impracticable."

Monument(s) & Accessories Found (Condition & Source):

Found the remains of a 3' diameter mound of stones on the East side of an open ridge.

Monument Detail:

TOMKINS SURVEYING  
T4N R37E

1/4

S 15

2000

PLS 2820

Monument Set (Procedures & Description): At the location of the center of the found stone mound, set a 1 1/2" x 30" Galvanized Iron Pipe with a 2 1/2" Brass Cap, marked as shown in the Monument Detail, 15" in the ground to solid rock. Surrounded with mound of earth and stones.

New Accessories: Set a 6' steel fence post West of the corner.

A 6" ponderosa pine marked "1/4 S15 BT" bears S33°31'W, 51.2 feet.

A 10" ponderosa pine marked "1/4 S15 BT" bears S64°56'W, 132.9 feet.

A 20" ponderosa pine marked "1/4 S15 BT" bears S84°58'W, 145.4 feet.

A 12" ponderosa pine marked "1/4 S14 BT" bears N02°31'E, 65.4 feet.

A 14" ponderosa pine marked "1/4 S14 BT" bears S74°24'E, 91.0 feet.

All bearing trees have a 6" red band painted around them and a Umatilla County Bearing Object sign attached.

The monument marking the West 1/4 corner of Section 14 bears N02°06'W, 12.79 feet.

Location & Comments: The corner is located on the Easterly side on an open finger ridge 300 feet ± North of the road into Elbow Creek

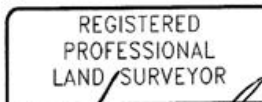
Compass Declination:

19° East

Firm/Agency: Tomkins Land Surveying, Inc.  
20 E. Poplar, Suite 204  
Walla Walla WA 99362

Party Chief: Greg E. Flowers  
Notes: Greg E. Flowers  
Witness: Brianna J. Slater

Surveyor's Seal



Greg E. Flowers  
OREGON  
JUNE 30, 1997  
GREG E. FLOWERS  
02820LS

RENEWS 12/31/01

RECEIVED BY

12/15/00

Umatilla County Surveyor?  
Date 12-00  
Rec'd By SM  
No. 00-256-C

**OREGON CORNER RESTORATION FORM**

**Section:** 14

**Township:** 4N

**Range:** 37 EWM

**County:** Umatilla

**Date:** 08/22/00

**Corner Designation:** L-17 West ¼ Section 14 only.

**Previous Renewals/Surveys, etc.:** U.S. Deputy surveyors, Charles L. and William C. Campbell, under Contract No. 733. Dated March 22, 1901. The Campbell's set closing corners at the N.W. and S.W. corners of Section 14 and did not set this corner.

**Monument(s) & Accessories Found (Condition & Source):**

None.

**Monument Detail:** T4N R37E

¼ S 14

2000

PLS 2820

**Monument Set (Procedures & Description):** On a line drawn between the found East ¼ corner of Section 15 and the found N.E. corner of Section 15, at the proportionate position between the reset N.W. corner of Section 14 and the found S.E. corner of Section 14, set a 1 1/2" x 30" Galvanized Iron Pipe with a 2 ½" Brass Cap, marked as shown in Monument Detail, 15" in ground. Surrounded with mound of earth and stones.

**New Accessories:** Set a 6' steel fence post 1' North of corner.

A 12" ponderosa pine marked "¼ S14 BT" bears N3° 38'E , 52.6 feet.

A 14" ponderosa pine marked "1/4 S14 BT" bears S67° 06'E, 95.7 feet.

A 6" ponderosa pine marked "1/4 S15 BT" bears S26°37'W, 62.0 feet.

A 10"ponderosa pine marked "¼ S15 BT" bears S60°03'W, 138.4 feet.

A 20" ponderosa pine marked "¼ S15 BT" bears S79°58'W, 146.6 feet.

All bearing trees have a 6" red band painted around them and a Umatilla County Bearing Object sign attached.

Corner is N2°06'04"W, 12.79 feet from monument marking the found East ¼ of Section 15.

**Location & Comments:** The corner is located on the Easterly side of an open finger ridge 300 feet ± North of the road into Elbow Creek.

**Compass Declination:**

19° East

**Firm/Agency:** Tomkins Land Surveying, Inc.

20 E. Poplar, Suite 204

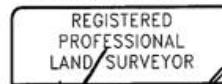
Walla Walla WA 99362

**Party Chief:** Greg E. Flowers

**Notes:** Greg E. Flowers

**Witness:** Brianna J. Slater

**Surveyor's Seal**



*Greg E. Flowers*  
OREGON  
JUNE 30, 1997  
GREG E. FLOWERS  
02820LS

RENEWES 12/31/01

12/15/00

**RECEIVED BY**

Umatilla County Surveyor

Date 12-00

Rec'd by SM

No. 00-258-C