

OREGON CORNER REFORMATION FORM

COUNTY: Umatilla DATE: 06/27/97

CORNER DESIGNATION: R-1, The Northwest Corner of Section 30, T4N., R35E., W.M.

PREVIOUS RENEWALS/SURVEYS, ETC.: Corner established by Wm. H. Odell, GLO Contract No. 114, dated July 2, 1866. Notes state: Set post cor. for secs. 24, 25, 19 & 30; drove charred stake, dug pits and raised mound as per instructions. Corner re-established by Z.F. Moody, GLO Contract No. 165, dated October 4, 1871. Notes state: Set post and made mound of earth for Cor. to Secs. 30, 25, 19 & 24. Corner re-established by Jas. P. Currin and Jas. E. Noland, under Special Contract dated May 4, 1887. Notes state: Found old pits and mound for Cor. to Secs. 24, 25, 19 and 30, redug pits, set post, 48 x 4 x 4 ins., 12 ins. in the ground, marked T. 4 N., S. 24 on N.W., R. 35 E. S 19 on N.E., S. 30 on S.E. R. 34 E. S. 25 on S.W. with 2 notches on S. and 4 notches on N. edges, raised a mound of earth, 2 ft. high, 4 1/2 ft. base around post.

MONUMENT AND ACCESSORIES FOUND: None. Re-established corner position by single proportionate measurement between the West 1/4 corner of Section 19 and the West 1/4 corner of Section 30.

MONUMENT MARKING DETAIL:

T4N
R34E R35E
S24 | S19
S25 | S30
1997
PLS 1106

MONUMENT SET:

Set a 2 1/2" brass cap on a 1" galvanized iron pipe 4" below pavement surface, cap marked as shown in Monument Marking Detail. Accessories:

A 5/8" x 24" iron rod with a yellow plastic cap marked "OR PLS 1106, WA PLS 17372 bears N 26° E, 122.6 feet.

A brass washer stamped "PLS 1106" nailed to Pacific Power and Light Pole #300900, bears S 35° E, 46.9 feet.

A 5/8" x 24" iron rod with a yellow plastic cap marked "OR PLS 1106, WA PLS 17372" bears S 41° W, 48.9 feet.

A brass washer stamped "PLS 1106" nailed to a Pacific Power and Light Pole #249002 bears N 15° W, 126.3 feet.

All iron rods have bearing object signs attached and a steel fence post nearby with witness signs attached.

Power poles have witness and bearing object signs attached.

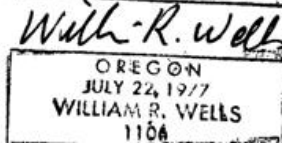
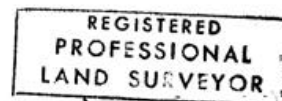
LOCATION & COMMENTS: Corner located approximately in centerline of Pambrun Road, 48 feet from visual centerline of Highway 11.

COMPASS DECLINATION: 18° East Surveyor's Seal

Witnesses: John Linder
Jason Wells

OREGON STATE PLANE NORTH CO-ORDINATE FOR CORNER, NAD 83(91), INT. FEET:

N: 785741.29
E: 8712771.37



Renews 6-30-98

97-141-C