

**OREGON CORNER RESTORATION FORM**

Section 04 Township 03 N Range 34 E, W.M. Corner Code No. 5

County Umatilla Date 5-5-93

2-9

**CORNER DESIGNATION**

Corner common to S32, S33, S5, & S4

- Condition Report Only
- Not Found
- Renewed
- Unrecorded
- Surveyed In
- Referenced Out

Previous Renewals/Surveys, etc. Corner originally set by W. Odell in 1866 was a post w/ charred stake, mounds, and pits.

No record of any perpetuation.

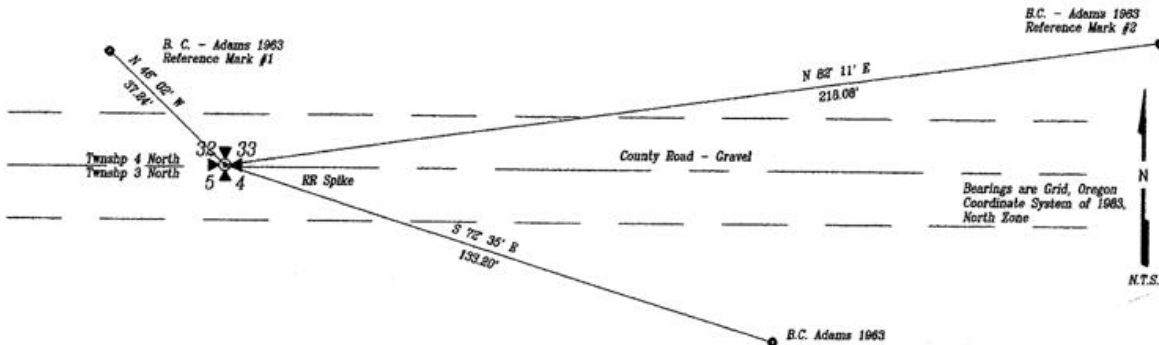
Monument(s) & Accessories Found: (Condition and Source)

Found a R.R. Spike in the center of a gravel county road. No record of who set or when.

The spike is at the location shown on Map Q-1122-C, records of the Umatilla County Surveyor.

**Monument Detail**

**Sketch**



**Monument Set (Procedures and Description)**

No new monument set.

**New Accessories**

Made ties to Adams triangulation station and reference monuments.

See sketch.

**Location & Comments**

Corner is located in the center of a county road, at a farm line. Compass Declination \_\_\_\_\_  
 Firm/Agency Dwight M. Bartleson L.S.  
 Address Rt. 1, Box 46  
Athena, OR 97813

**Surveyor's Seal**

RECEIVED BY  
Umatilla County Surveyor  
 Date 5-9-93  
 Rec'd By [Signature]  
 No. 93-48-B

Party Chief D. Bartleson  
 Notes \_\_\_\_\_  
 Witness \_\_\_\_\_

