

OREGON CORNER RESTORATION FORM

COUNTY: Umatilla DATE: 10/12/00

CORNER DESIGNATION: E-1, Southwest Corner Section 6, T4N., R35E., W.M..

PREVIOUS RENEWALS/SURVEYS ETC.: Corner originally established by William Odell, U.S. Deputy Surveyor, under Contract No. 114, dated 2 July 1866. The original notes state: Set post cor. For secs. 1, 12, 6 & 7; drove charred stake, dug pits and raised mound as per instructions. Corner re-established by Staebler, PLS 1333, on January 27, 1988, Umatilla County Surveyor Record #88-9-A. Notes state: Found a very old Locust fence post in an old fence line and plow line running east and west marking the section corner location. This post lines up with roads and fence lines several miles to the south. Set 2" x 30" G.I.P. with flared base and 2 1/2" brass cap 6" above the ground, 2 feet N.E. of the old Locust fence post. New Accessories: A witness monument bears S 45°26' W, 6.00 feet. A witness monument bears S 44°34' E, 6.00 feet. Witness monuments are 5/8" x 30" rebar with red plastic caps marked R.L.S. 1333. Set steel fence posts near each W.C. and B.C. with yellow witness signs attached.

MONUMENT AND ACCESSORIES FOUND: Found disturbed 2 1/2" brass cap at corner point. A 5/8" iron pin with red plastic cap stamped "RLS 1333" bears S 44°34' E, 6.0'. A 5/8" iron pin with red plastic cap stamped "RLS 1333" bears S 45°26' W, 6.0' with steel fence post and bearing object sign. Straightened corner monument with reference to witness accessories.

MONUMENT MARKING DETAIL:

T4N
R34E R35E
S1 | S6
S12 | S7
1988
RLS 1333

NEW ACCESSORIES TO EXISTING MONUMENT:

Reset steel fence post and attached new bearing object sign to 5/8" iron rebar with red plastic cap found bearing S 45°26' W, 6.0'.

New Witness Monuments:

A silver deep-1 magnet 14" below ground bears N 42° E, 38.5 feet.

An orange deep-1 magnet 14" below ground bears N 27 1/2° W, 35.6 feet.

Buried bearing object signs alongside deep-1 magnets. Set "witness" sign on old locust post.

LOCATION AND COMMENTS: Corner located in old fence and plow line running East-West.

OREGON STATE PLANE COORDINATES, North Zone, NAD 83(91), International Feet:

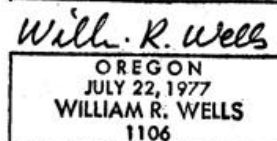
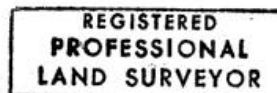
N = 801640.21
E = 8712293.74

FIRM: William R. Wells, PLS
P.O. Box 1696
Pendleton, OR 97801

COMPASS DECLINATION: 20° East

Witnesses: Jason Wells
Kevin Snively
W4N35E1

Surveyor's Seal



Renews 6-30-02

02-12-C