

OREGON CORNER RESTORATION FORM

Section 1 Township 4 N Range 34 E

County Umatilla Date 1-27-88

E-21

CORNER DESIGNATION

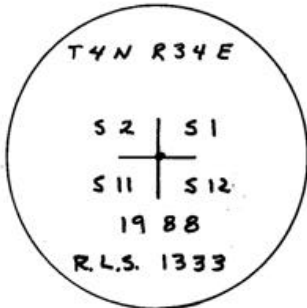
- Condition Report Only
- Not Found
- Renewed
- Unrecorded
- Surveyed In
- Referenced Out

Previous Renewals/Surveys, etc. Originally post, pits, and mounds (1865)

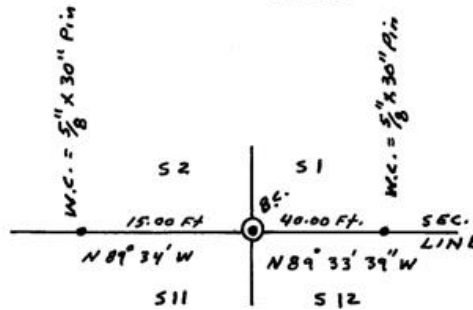
Monument(s) & Accessories Found: (Condition and Source)

Found old fence lines and plowlines running east and west and north and a steel fence post at its intersection.

Monument Detail



Sketch



Monument Set (Procedures and Description)

Set 1" x 30" G.I.P. w/flared base and 2 1/2" brass cap 6" above the ground.

New Accessories

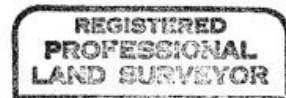
A witness monument bears N 89° 34' W - 15.00 feet
A witness monument bears S 89° 34' E - 40.00 feet
Witness monuments are 5/8" x 30" rebar with red plastic caps marked R.L.S. 1333. Set steel fence posts near each W.C. and B.C. with yellow witness signs attached.

Location & Comments

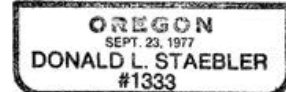
Corner is located
at intersection of
fence and plowlines
running East - West
and North

Compass Declination _____
 Firm/Agency Don Staebler
 Engineer - Surveyor
 Address 1532 S. W. 41st
Pendleton, OR 97801
 Party Chief Don Staebler

Surveyor's Seal



Donald L. Staebler



RECEIVED BY

Umatilla County Surveyor

Date 2-88

Rec'd By [Signature]

No. 88-9-A

Notes _____

Witness _____