

OREGON CORNER R TORA ON FORM

COUNTY: Umatilla

DATE: January 28, 2005

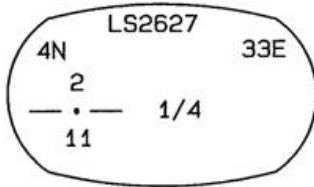
CORNER DESIGNATION: E-19, South 1/4 Corner Section 2, Township 4 North, Range 33 E.W.M.

PREVIOUS RENEWALS/SURVEYS ETC.

Odell and Lewis set a post, dug pits, and raised mound in 1865 under G.L.O. Contract No. 110; John Arnold set a monument (unknown type) in his 1882 Plat of Helix at the 1/4 corner position; PLS 852 held Arnold's 1/4 corner location in surveys done for the City of Helix from 1999 through 2001.

MONUMENT AND ACCESSORIES FOUND: None

MONUMENT MARKING DETAIL:



OREGON STATE PLANE COORDINATES, NORTH ZONE, NAD'83 ('91), INT. FEET:

NORTH: 801,277.99

EAST: 8,672,337.04

MONUMENT SET (PROCEDURES AND DESCRIPTION):

At a point N89°34'00"W, 269.92 feet (record, Survey No. 04-136-C) along the section line from the iron pin set by Greg Flowers, Survey No. 01-162-B, marking the section line/Solar Street intersection, set a railroad spike with punch mark stamped as shown above in monument marking detail.

NEW ACCESSORIES:

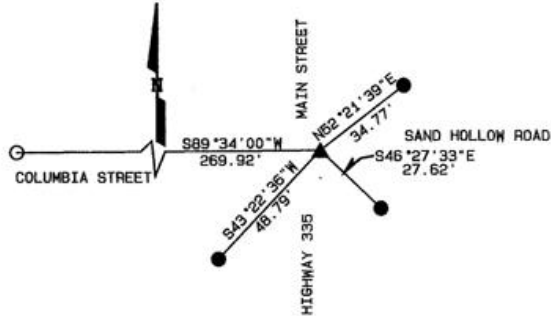
A 5/8" iron rebar with yellow plastic cap set by PLS 2820 bears S89°34'00"W, 269.92 feet

A 5/8" iron rebar with yellow plastic cap marked "UCPWD...LS2627" bears N52°21'39"E, 34.77 feet; PP&L pole 024019 with bearing object tag attached bears 0.6' easterly from pin.

A 5/8" iron rebar with yellow plastic cap marked "UCPWD...LS2627" bears S46°27'33"E, 27.62 feet; a railroad tie with bearing object tag attached bears 0.6' easterly from pin.

A 5/8" iron rebar with yellow plastic cap marked "UCPWD...LS2627" bears S43°22'36"W, 48.79 feet; PP&L pole 115901 with bearing object tag attached bears 0.3' westerly from pin.

SKETCH: NOT TO SCALE



- ▲ SET RAILROAD SPIKE FLUSH WITH PAVEMENT MARKED AS SHOWN IN MONUMENT MARKING DETAIL
- SET 5/8" X 30" IRON REBAR WITH YELLOW PLASTIC CAP MARKED "UCPWD...LS2627"
- FOUND MONUMENT AS NOTED BELOW LEFT

LOCATION AND COMMENTS:

Monument is located at the intersection of Main Street, Columbia Street, Highway 335, and Sand Hollow Road

COMPASS DECLINATION:

N/A

FIRM/AGENCY:

Umatilla County Road Dept. 3920 Westgate Pendleton, Oregon 97801

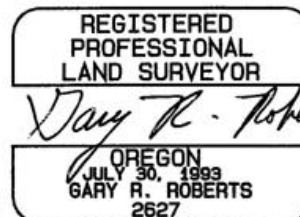
PARTY CHIEF:

Gary Roberts

NOTES:

WITNESS:

SURVEYOR'S SEAL



RECEIVED BY Umatilla County Survey RENEWS 12/31/06

Date 2-05

Rec'd By KK

No. 05-17-R