

OREGON CORNER RESTORATION FORM

Section: 1
Township: 4 North
Range: 33 East of the Willamette Meridian
County: Umatilla
Date: 02/06/02

Corner Indexing Information: Township 4N Range 33E Corner Code A-25 (Willamette Meridian)

Additional Identifier: (e.g. BLM designation for the corner, street intersection, plat name, block, lot, etc.)

Northeast corner Section 1

Oregon Plane Coordinates: N:805844.258 E: 8680520.283

Zone: North **Order:** second **Datum:** NAD83-91 **Convergence:** 1°19'54.7" **Scale Factor:** 0.99987980

Previous Renewals/Surveys, etc.:

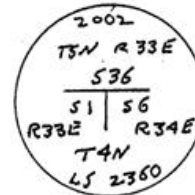
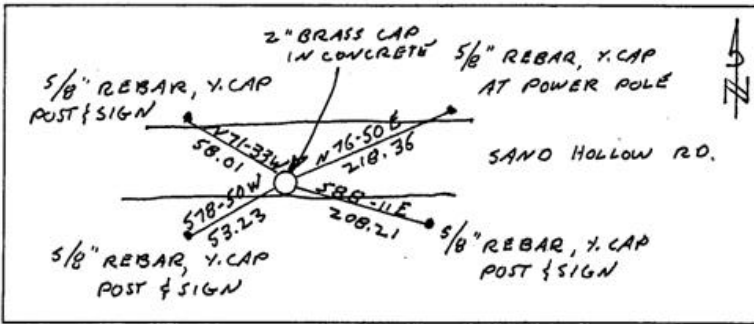
Corner was originally set by Odell and Lewis in 1866 under contract no. 110 as a post, being a closing corner 6.78 chains West of the Standard Corner. 1940 plans by Bonneville Power Administration show this corner as being 215 ft. West of intersection of power line and old county road centerline.

Monument(s) & Accessories Found (Condition & Source):

Corner not found. Power poles in Sections North and South of this corner are still in positions shown on the 1940 plans. Corner is reestablished from those poles, which caused us to ascertain that the current road is somewhat North of its prior position.

Monument Set (Procedures & Description):

Monument Detail:



Location & Comments:

Compass Declination:

19° East

Surveyor's Seal

Firm/Agency: Tomkins Land Surveying, Inc.
 20 E. Poplar, Suite 204
 Walla Walla WA 99362

REGISTERED
 PROFESSIONAL
 LAND SURVEYOR

Party Chief: PWPT

Notes:

Witness: JLD

OREGON
 JULY 26, 1988
 PAUL W. P. TOMKINS
 2360

LRPWS 6-30-04

2/11/03

RECEIVED BY
 Umatilla County Surveyor
 Date 2-03
 Rec'd By KK
 No. 03-28-9