

**OREGON CORNER RESTORATION FORM**

SECTION: 12 TOWNSHIP: 4N

RANGE: 29E

G-25

COUNTY: UMATILLA

DATE: 9/2013

**CORNER DESIGNATION**

E 1/4

- CONDITION REPORT ONLY
- NOT FOUND
- RENEWED
- UNRECORDED
- SURVEYED IN
- REFERENCED OUT

**PREVIOUS RENEWALS/SURVEYS ETC.**

Originally surveyed by Campbell under Contract #95 in 1860. He drove a charred stake, raised mound of earth with trench and pits.

**MONUMENTS AND ACCESSORIES FOUND: CONDITON AND SOURCE**

Found a 1 1/2" I.D. Iron Pipe at a fence corner. I found no record of it being set. I did not use it. It lies about 22 feet west of the true position.

**MONUMENT DETAIL**

T4N R29E T4N R30E

1/4

S12 | S7

2013

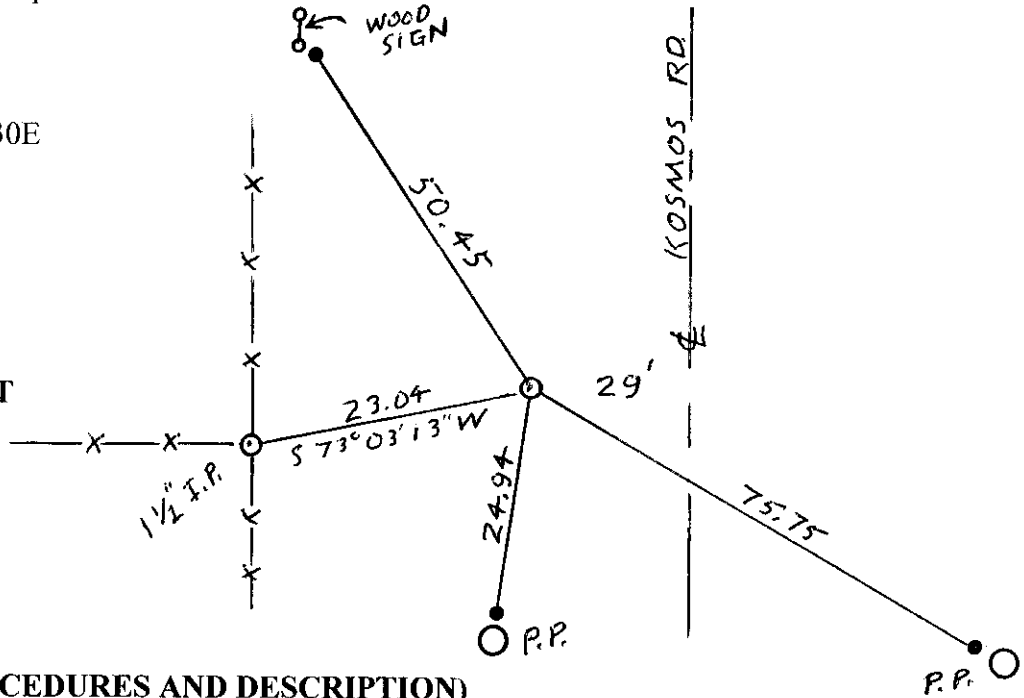
LS 951

**NAD 83/91**

**INTERNATIONAL FEET**

796281.22

8553256.66



**MONUMENT SET (PROCEDURES AND DESCRIPTION)**

By single proportion I set a 1" x 30" iron pipe with a 2 1/2" brass cap at the surface stamped as above.

**NEW ACCESSORIES FROM WHICH**

- A 1 1/2" iron pipe bears S 73° 03' 13" W 23.04'
- A 5/8" x 30" Iron Rebar with plastic cap #951 bears N 24° 16' 48" W 50.45'
- A 5/8" x 30" Iron Rebar with plastic cap #951 bears S 65° 22' 34" E 75.75'
- A 5/8" x 30" Iron Rebar with plastic cap #951 bears S 5° 35' 10" W 24.94'

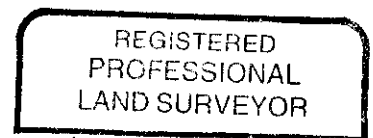
**LOCATION AND COMMENTS**

From the intersection of Loop Road and Kosmos Road, go east on Kosmos Road 1.5 mile to angle in said road. Then go north along Kosmos Road 0.5 mile. Corner lies 30 west of c/l road.

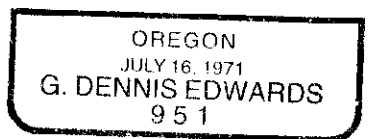
**SURVEYOR'S SEAL**

**FIRM: EDWARDS SURVEYING LLC  
PO BOX 763 - HERMISTON OR 97838**

**PARTY CHIEF: G. EDWARDS  
WITNESS: R. FRITZ**



*G. Dennis Edwards*



RENEWS 12/31/13

13-532-C