

OREGON CORNER RESTORATION FORM

Section 03, 02, 10, 11 Township 4N Range 30E
 County Umatilla Date: 05-08-2006

Corner Designation: 4N30E E17

Condition Report Only
 Not Found
 Remonumented
 Unrecorded
 Surveyed In
 Referenced Out

Previous Renewals / Surveys, etc.

08-1861 D.Payne GLO(100) "Set Charred Stake with mound trench and pits"

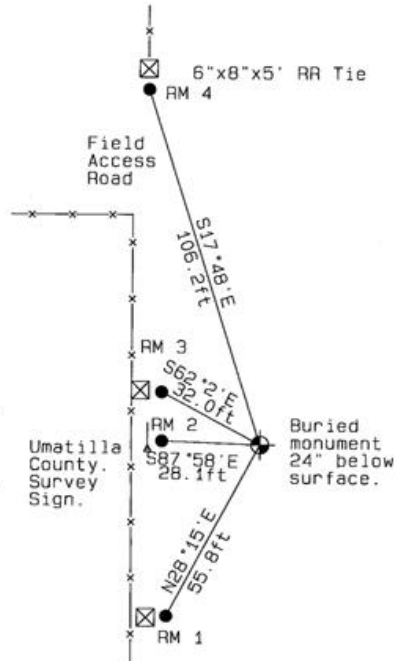
Monument and Accessories Found: (condition and source)

None

DIAGRAM



- Wire Fence line
- Set 2-3/8" dia. Brass cap on a 1-1/2" x 30" long Galvanized pipe monument.
- Wood fence post
- 5/8" dia. x 24" long Iron Rebar with a 2.5" dia. Orange plastic cap
- 5 foot steel U-Post



MONUMENT (S) AND ACCESSORIES SET (Procedures and Description)

Set a 2-3/8" dia. Brass Capped monument (stamped as shown) on a 1-1/4" ID x 30" long galvanized pipe 24" below ground surface. Set a Umatilla County Survey Marker sign on 5' steel T-Post. Facing East toward corner.

REFERENCES SET:

Set four (5/8" dia x 24" long Iron rebar with a 2.5" dia. Orange plastic cap) to the bearings and distances from monument shown above in the sketch.

Made GPS tie to TRI Stations
 LAURILA RESET RB 1379 and
 WALLS RB 1396
 Latitude 45°51'01.620683"N
 Longitude 119°02'13.489591"W
 NAD 83(1991)

Oregon State Plane Coord. - North Zone
 Northing 799544.85
 Easting 8574860.08
 Ortho Height 998.72
 Ellipsoidal Height 929.50

Location and Comments Compass Declination Surveyors Seal
 18° E

Proceed 1.1 miles South on Umatilla County Road 1172 (KOSMOS ROAD) around the curve West. Turn South along access road East. Thence 0.15 miles to the South access road along the East side Section 3. Thence 0.92 miles to field access road as shown in sketch.

REGISTERED
 PROFESSIONAL
 LAND SURVEYOR

RECEIVED BY:

Firm / Agency

David L. Haddock

Date: 05-06

Haddock Surveying

OREGON
 JULY 12, 1968
 DAVID L. HADDOCK
 852

Rec'd By:

P. O. Box 1574
 Pendleton, OR 97801
 (541) 276-2174

No.: 06-263-C

RENEWS 6-30-07