

OREGON CORNER RESTORATION FORM

Section 01,02 Township 4N Range 30E
 County Umatilla Date: 05-08-2006

Corner Designation: 4N30E A21

Condition Report Only
 Not Found
 Remonumented
 Unrecorded
 Surveyed In
 Referenced Out

Previous Renewals / Surveys, etc.

- 02-1860 H.Maxon/J.Hurd STD PARALLEL (50) "Set post for corner to Sects. 35 & 36 in mound of earth, trench & pits as per instructions."
- 08-1861 D.Payne GLO Subdv (100) "Intersect N line Town 4 (Standard parallel) at post corner to secs 35 & 36 T5NR30, and secs 2 & 1 T4NR30E."
- 05-1966 W.Harris (C-16-B) "Found Stone"
- 05-1974 D.Krumbein (I-25-B) "FND STONE"
- 06-1974 D.Krumbein (I-24-B) "FND STONE"
- 06-1974 D.Krumbein (I-167-B) "FND STONE"
- 07-1979 L.Jones (Q-1129-C) "Stone FD by Harris 5/7/66 not FD by TEC 1979"

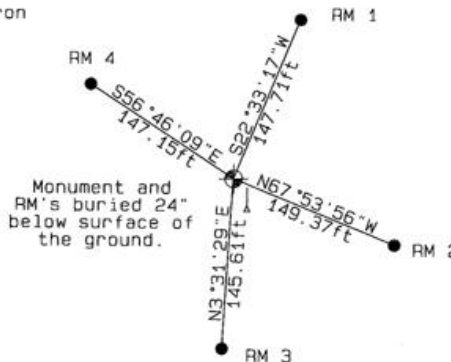
Monument and Accessories Found: (condition and source)

Post or Stone not found.Fence line and corner was farmed in the late 1970's by the property owner. Monument location is in a plowed field. Terrain shows East - West berm and North - South berm intersection. Reestablished corner by Umatilla County Survey (I-25-B) 05-1974 D.Krumbein with corners 4N30A9, 4N31A5, 5N30V17.

DIAGRAM



- Set 2-3/8"dia. Brass cap on a 1-1/2" x 24" long Galvanized pipe monument.
- 5/8"dia. x 24" long Iron Rebar with a 2.0"dia. aluminum cap.
- 5 ft steel T-Post with a Umatilla County Survey sign.



MONUMENT(S) AND ACCESSORIES SET (Procedures and Description)

Set a 2-3/8"dia.Brass Capped monument (stamped as shown) on a 1-1/4"ID x 30"long galvanized pipe 24" below the ground surface. Set a 5 ft steel T-Post with a Umatilla County Survey Marker sign facing North toward the monument.

REFERENCES SET:

Set four (5/8" dia x 24" long Iron rebar with a 2.0" dia. aluminum cap) 24" below the surface of the ground to the bearings and distances from monument shown above in the sketch.

Made GPS tie to TRI Stations	Oregon State Plane Coord. - North Zone
LAURILA RESET RB 1379 and	Northing 804552.71
WALLS RB 1396	Easting 8580129.02
Latitude 45°51'50.104068"N	Ortho Height 1074.97
Longitude 119°00'57.765028"W	Ellipsoidal Height 1005.81
NAD 83(1991)	

Compass Declination
18°E

Location and Comments

Proceed 2.1 miles South on Umatilla County Road 1172 (KOSMOS ROAD) . Thence South along access road 1.00 miles to a ravine NorthEast and field access road. Thence 0.75 miles to a true East-West direction. Thence East 0.25 miles to the corner.

Surveyors Seal

REGISTERED
PROFESSIONAL
LAND SURVEYOR

David L. Haddock

OREGON
JULY 12, 1968
DAVID L. HADDOCK
852

RECEIVED BY:

Firm / Agency

Date: 05-06
 Rec'd By: _____
 No.: 06-263-C

Haddock Surveying
 P. O. Box 1574
 Pendleton, OR 97801
 (541) 276-2174

RENEWS 6-30-07