

CORNER RESTORATION FORM

Township 3N, 4N Range 29E Section 1,2,35,36 County UMATILLA

State OREGON Date 3/30/2023 Number Z-21

Condition Report Only

Corner Designation : SECTION CORNER: 1, 2, 35, 36

Not Found
 Renewed

Previous Renewals ORIGINAL SOURCE OF CORNER

Surveyed In
 Referenced

ORIGINALLY SURVEYED IN 1859 BY GATES HE SET A POST IN MOUND OF EARTH

MONUMENT DETAIL

Found Set

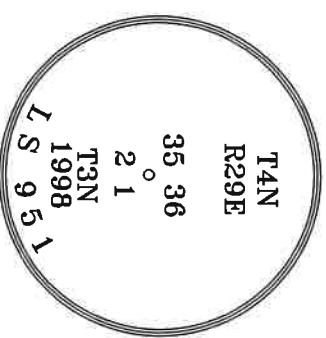
1998 EDWARDS SET A 1"X30" I.P. W/ 2-3/8" B.C. BY SINGLE

PROPORTION COUNTY SURVEY NO. 98-213-C & CORNER FORM

NO. Z21-98-213-C

BASIS OF BEARINGS, NAD 83/91 OREGON STATE PLANE
COORDINATES NORTH ZONE:

NORTHING: 772422.32
EASTING: 8548347.38



Monument & Accessories Set/Found (Procedure and Description)

AT CORNER FOUND A 2 3/8" BRASS CAP 4" BELOW GRADE, COUNTY SURVEY NO. 98-213-C & CORNER FORM NO. Z21-98-213-C

FOUND A ALUMINUM TAG 951 ON POWER POLE N 81°51' E 155.81', CORNER FORM NO. Z21-98-213-C

FOUND A 5/8" IRON ROD NO CAP BENT WEST TIED SPINHOLE S 04°26' W 17.26', CORNER FORM NO. Z21-98-213-C

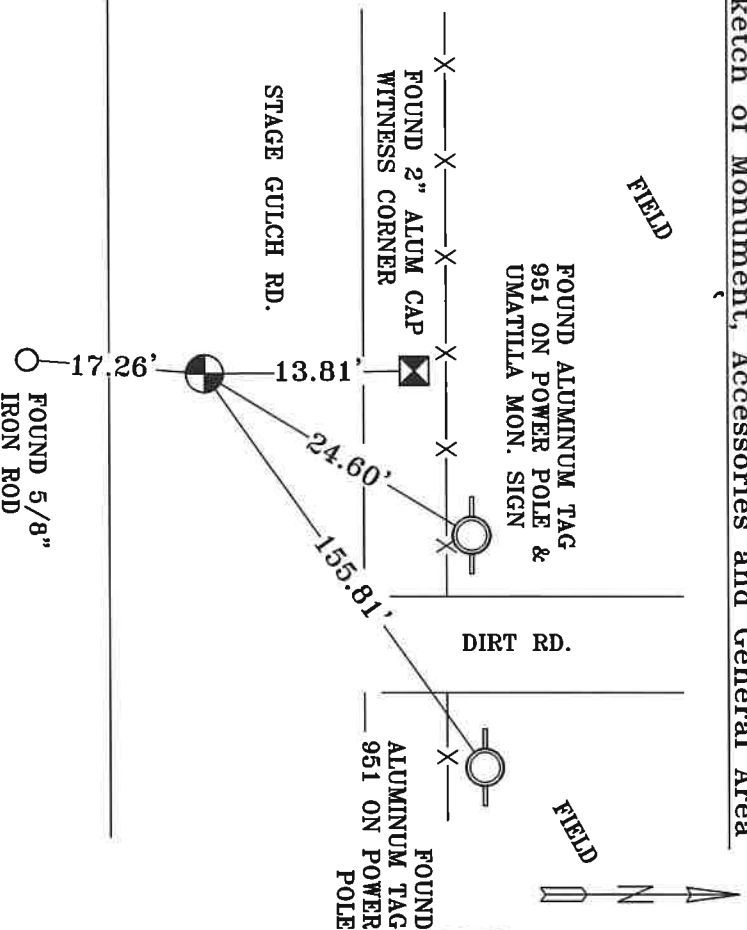
Z21-98-213-C

FOUND A 2" ALUM CAP WITNESS CORNER N 01°26' W 13.81', CORNER FORM NO. Z21-98-213-C

FOUND A ALUMINUM TAG 951 ON POWER POLE W/UMATILLA MON. SIGN N 42°42' E 24.60', CORNER FORM NO. Z21-98-213-C

Z21-98-213-C

Sketch of Monument, Accessories and General Area



**REGISTERED
PROFESSIONAL
LAND SURVEYOR**

Lance Clark King
**OREGON
MAY 10, 2011
LANCE CLARK KING
61420**

RENEWALS: 6/30/2023

Agency: **CK3, LLC**
945 W. ORCHARD
HERMISTON OREGON 97838
OFFICE: 541-567-2345
FAX: 541-567-2305
WEB: CK3ILC.NET
Field Book # 0-350

COUNTY SURVEYOR
RECORDING INFO

Received CT

Filed 5/4/23

Survey No. 23-042-C

Drawing No. _____

Index No. Z-21