

OREGON CORNER RESTORATION FORM

SECTION 35.2 TOWNSHIP 4&3 NORTH RANGE 29 EAST Z-19
 COUNTY : UMATILLA DATE 11/01

CORNER DESIGNATION

1/4 CORNER

CONDITION REPORT ONLY
 NOT FOUND
 RENEWED
 UNCOVERED
 SURVEYED IN
 REFERENCED

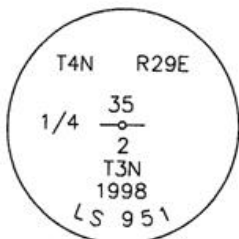
PREVIOUS RENEWALS / SURVEYS, ETC.

ORIGINALLY SURVEYED IN 1859 BY GATES UNDER CONTRACT #84. HE SET A POST IN A MOUND OF EARTH.
 IN 1998 EDWARDS SET A 1" x 30" IRON PIPE WITH A 2 3/8" BRASS CAP BY SINGLE PROPORTION.

MONUMENTS AND ACCESSORIES FOUND: CONDITION AND SOURCE

AN ALUMINUM TAG #951 ON A POWER POLE LIES N 71°08'00" E, 32.96 FEET.
 AN ALUMINUM TAG #951 ON A R x R TIE LIES S 16°37'55" E, 41.98 FEET.
 A 5/8" x 30" IRON ROD WITH A YELLOW PLASTIC CAP MKD "#951" LIES S 17°33'15" E, 39.98 FEET.
 A 5/8" x 30" IRON ROD WITH A YELLOW PLASTIC CAP MKD "#951" LIES N 0°20'15" W, 10.46 FEET.

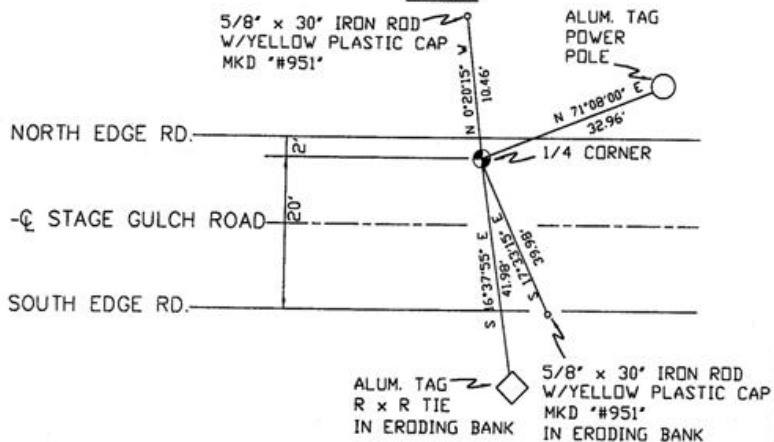
MONUMENT DETAIL



NAD 83/91
 OREGON STATE PLANE
 INTERNATIONAL FEET

772358.3099
 8545697.7721

SKETCH



MONUMENT SET (PROCEDURES AND DESCRIPTION)

NEW ACCESSORIES FROM WHICH

RECEIVED BY
 Umatilla County Surveyor
 Date 12-01
 Rec'd by KK
 No. 01-213-D

LOCATION AND COMMENTS

WEST 1 1/2 MILE FROM LARGE POWER LINE IN OLD STAGE GULCH ROAD.

COMPASS DEC.

FIRM/AGENCY
 PRIMM LAND SURVEYING
 P.O. BOX 1322
 HERMISTON, OREGON 97838

PARTY CHIEF
 KEITH P. PRIMM

NOTES

WITNESS
 BRIT L. PRIMM

SURVEYOR'S SEAL

REGISTERED
 PROFESSIONAL
 LAND SURVEYOR

Brit L. Primm

OREGON
 JULY 13, 1999
 BRIT L. PRIMM
 48509

EXPIRATION DATE: 12/31/02