

CORNER RESTORATION FORM

Township 3N, 4N Range 29E Section 2,3,34,35 County UMATILLA

State OREGON Date 3/30/2023 Number Z-17

Condition Report Only

Corner Designation : SECTION CORNER: 2, 3, 34, 35

Not Found
 Renewed

Previous Renewals ORIGINAL SOURCE OF CORNER

Surveied In
 Referenced

ORIGINALLY SURVEYED IN 1859 BY GATES HE SET A POST
 IN MOUND OF EARTH

MONUMENT DETAIL

Found Set

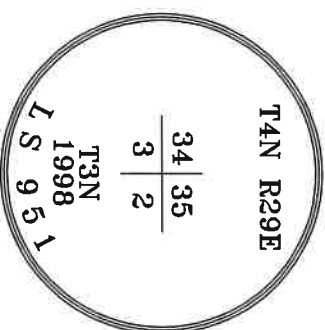
1998 EDWARDS SET A 1"X30" I.P. W/ 2-3/8" B.C. BY SINGLE

PROPORTION COUNTY SURVEY NO. 98-213-C & CORNER FORM

NO. Z17-98-213-C

BASIS OF BEARINGS, NAD 83/91 OREGON STATE PLANE
 COORDINATES NORTH ZONE:

NORTHING: 772294.35
 EASTING: 8543048.37



Monument & Accessories Set/Found (Procedure and Description)

AT CORNER FOUND A 2 3/8" BRASS CAP W/UMATILLA MON. SIGN, COUNTY SURVEY NO. 98-213-C & CORNER
 FORM NO. Z17-98-213-C

FOUND A ALUMINUM TAG 951 ON SAWED OFF POWER POLE N 45°34' E 78.67', CORNER FORM NO.

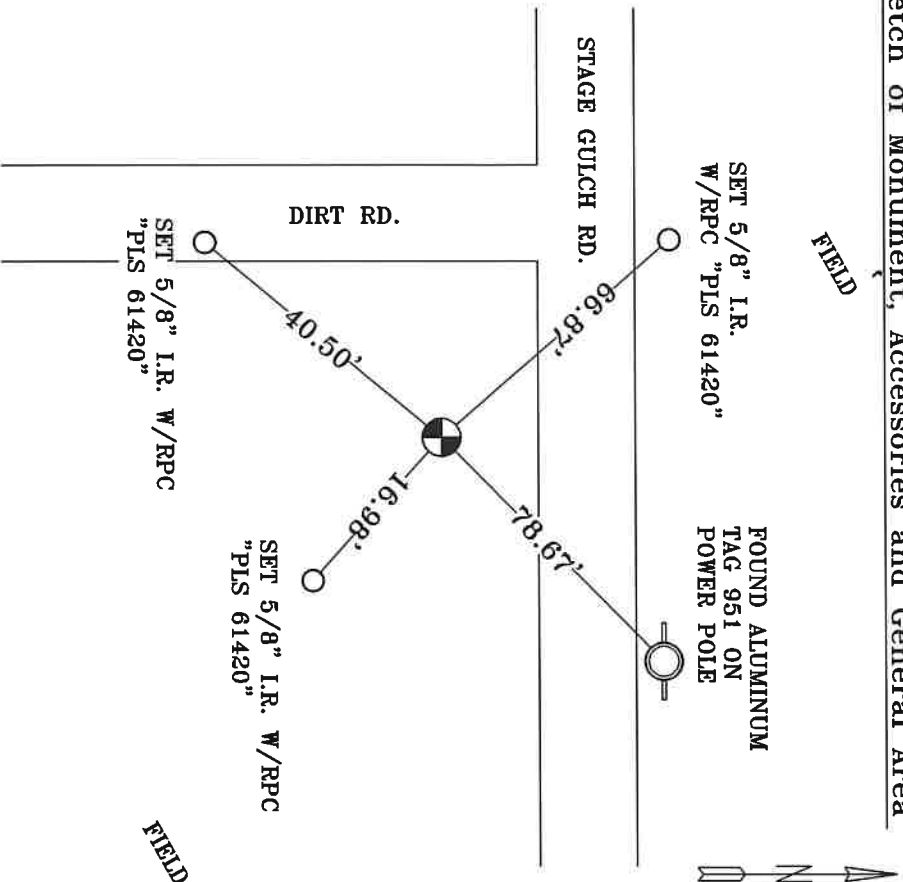
Z17-98-213-C

SET A 5/8" I.R. W/RPC"PLS 61420" 2" BELOW GRADE N 40°58' W 66.87'

SET A 5/8" I.R. W/RPC"PLS 61420" 2" BELOW GRADE S 39°35' W 40.50'

SET A 5/8" I.R. W/RPC"PLS 61420" 2" BELOW GRADE S 48°15' E 16.98'

Sketch of Monument, Accessories and General Area



**REGISTERED
 PROFESSIONAL
 LAND SURVEYOR**

Lance Clark King
OREGON
MAY 10, 2011
LANCE CLARK KING
61420

RENEWALS: 6/30/2023

Agency: **CK3, LLC**
 945 W. ORCHARD
 HERMISTON OREGON 97838
 OFFICE: 541-567-2345
 FAX: 541-567-2305
 WEB: CK3LLC.NET
 Field Book # 0-350

COUNTY SURVEYOR
 RECORDING INFO

Received CT
 Filed 5/4/23
 Survey No. Z3-042-C
 Drawing No. _____
 Index No. Z-17