

CORNER RESTORATION FORM

Township 3N, 4N Range 29E Section 4, 33 County UMATILLA

State OREGON Date 3/30/2023 Number Z-11

Condition Report Only

Corner Designation : 1/4 CORNER: 4, 33

Not Found
 Renewed

Previous Renewals ORIGINAL SOURCE OF CORNER

Surveyed In
 Referenced

ORIGINALLY SURVEYED IN 1859 BY GATES HE SET A POST
IN MOUND OF EARTH

MONUMENT DETAIL

Found Set

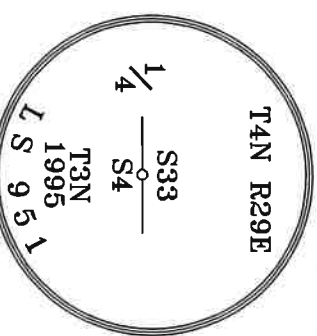
1995 EDWARDS SET A 1"X30" I.P. W/ 2-3/8" B.C. BY SINGLE

PROPORTION COUNTY SURVEY NO. 95-060-B & CORNER FORM

NO. Z11-95-060-B

BASIS OF BEARINGS, NAD 83/91 OREGON STATE PLANE
COORDINATES NORTH ZONE:

NORTHING: 772093.26
EASTING: 8535123.79



Monument & Accessories Set/Found (Procedure and Description)

AT CORNER FOUND A 2 3/8" BRASS CAP 7" BELOW GRADE IN ROAD, COUNTY SURVEY NO 95-060-B & CORNER FORM NO. Z11-95-60-B

FOUND A ALUMINUM TAG 951 IN RAILROAD TIE FENCE POST N 66°43' E 26.10', CORNER FORM NO. Z11-95-60-B

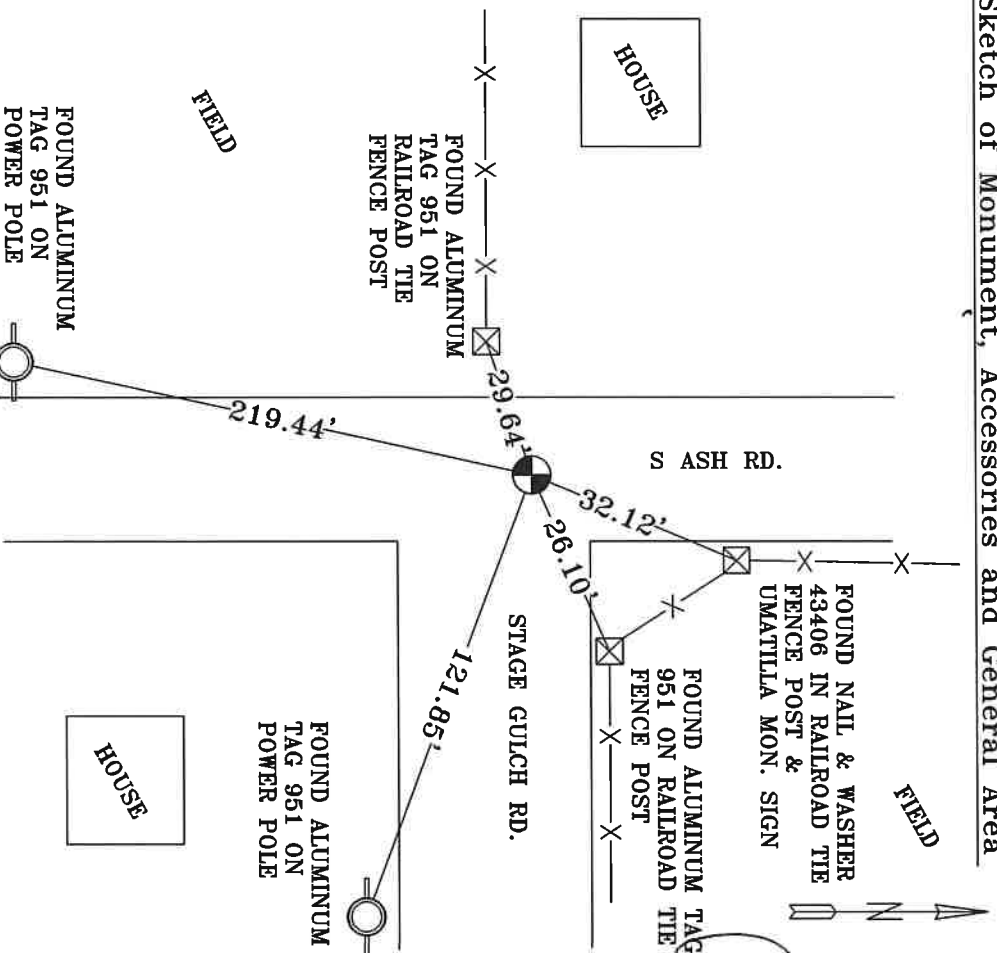
FOUND A ALUMINUM TAG 951 IN RAILROAD TIE FENCE POST S 73°04' W 29.64', CORNER FORM NO. Z11-95-60-B

FOUND A ALUMINUM TAG 951 IN POWER POLE FENCE POST S 77°09' E 121.85', CORNER FORM NO. Z11-95-60-B

FOUND A ALUMINUM TAG 951 IN POWER POLE S 04°26' W 219.44', CORNER FORM NO. Z11-95-60-B

FOUND A NAIL W/WASHER 43406 ON RAILROAD TIE FENCE POST & SET UMATILLA MON. SIGN N 23°03' E 32.12', CORNER FORM NO. Z11-11-008-R & Z11-09-16-R

Sketch of Monument, Accessories and General Area



**REGISTERED
PROFESSIONAL
LAND SURVEYOR**

Lance Clark King
OREGON
MAY 10, 2011
LANCE CLARK KING
61420

RENEWALS: 6/30/2023

Agency: **CK3, LLC**
945 W. ORCHARD
HERMISTON OREGON 97838
OFFICE: 541-567-2345
FAX: 541-567-2305
WEB: CK3LLC.NET
Field Book # 0-350

**COUNTY SURVEYOR
RECORDING INFO**

Received CT
Filed 5/4/23
Survey No. 23-042-C
Drawing No. _____
Index No. Z-11