

OREGON CORNER RESTORATION FORM

SECTION 29,32 TOWNSHIP 4 NORTH RANGE 29 EAST V-7

COUNTY : UMATILLA DATE 01/02

CORNER DESIGNATION

1/4 CORNER

X CONDITION REPORT ONLY

- NOT FOUND
- RENEWED
- UNCOVERED
- SURVEYED IN
- REFERENCED

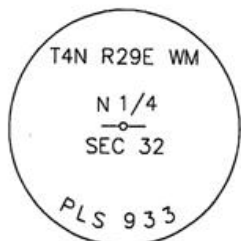
PREVIOUS RENEWALS / SURVEYS, ETC.

ORIGINALLY SURVEYED IN 1861 BY DAVENPORT UNDER CONTRACT #101. HE SET A POST IN A MOUND OF EARTH AND A CHARRED STAKE.
 IN 1950 FRALEY SET A 1 1/2" IRON PIPE.
 IN 1974 KRUMBEIN SET A 2 1/2" B.C. IN PLACE OF FRALEY IRON PIPE.

MONUMENTS AND ACCESSORIES FOUND: CONDITION AND SOURCE

AN ALUMINUM TAG #951 ON A POWER POLE LIES S 27°27'51" E, 59.58 FEET.
 AN ALUMINUM TAG #951 ON A POWER POLE FENCE POST LIES S 52°53'24" W, 33.85 FEET.

MONUMENT DETAIL

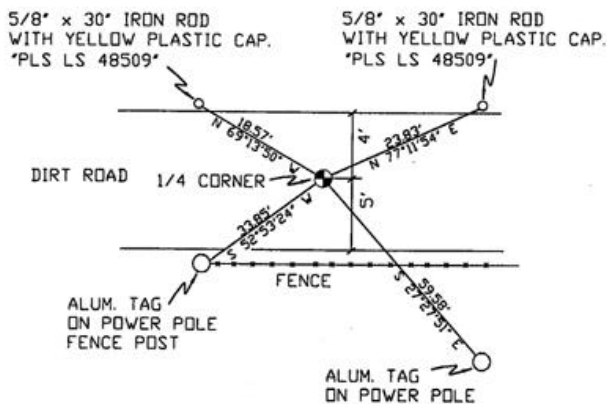


NAD 83/91
 OREGON STATE PLANE
 INTERNATIONAL FEET

777243.9486
 8529794.9772



SKETCH



MONUMENT SET (PROCEDURES AND DESCRIPTION)

NEW ACCESSORIES FROM WHICH

A 5/8" x 30" IRON ROD WITH A YELLOW PLASTIC CAP MKD "PLS LS 48509" 1' BELOW SURFACE LIES N 69°13'50" W, 18.57 FEET.
 A 5/8" x 30" IRON ROD WITH A YELLOW PLASTIC CAP MKD "PLS LS 48509" 1' BELOW SURFACE LIES N 77°11'54" E, 23.83 FEET.

RECEIVED BY

Umatilla County Surveyor
 Date 2-02
 Rec'd By KE
 No. 02-49-9
 SURVEYOR'S SEAL

LOCATION AND COMMENTS

FROM INTERSECTION OF
 LOCUST ST. AND HWY 395
 GO NE'LY 0.3 MILES TO COR.

COMPASS DEC.

FIRM/AGENCY
 PRIMM LAND SURVEYING
 P.O. BOX 1322
 HERMISTON, OREGON 97838

PARTY CHIEF
 KEITH P. PRIMM

NOTES

WITNESS
 BRIT L. PRIMM

REGISTERED
 PROFESSIONAL
 LAND SURVEYOR

Brit L. Primm
 OREGON
 JULY 13, 1999
 BRIT L. PRIMM
 48509

EXPIRATION DATE:12/31/02