

OREGON CORNER RESTORATION FORM

SECTION 29,30,31,32 TOWNSHIP 4 NORTH RANGE 29 EAST V-5
 COUNTY : UMATILLA DATE 01/02

CORNER DESIGNATION

SECTION CORNER

- CONDITION REPORT ONLY
 NOT FOUND
 RENEWED
 UNCOVERED
 SURVEYED IN
 REFERENCED

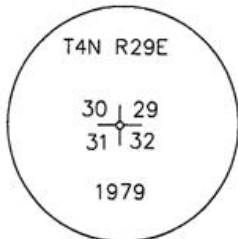
PREVIOUS RENEWALS / SURVEYS, ETC.

ORIGINALLY SURVEYED IN 1861 BY DAVENPORT UNDER CONTRACT #101. HE SET A POST IN A MOUND OF EARTH AND A CHARRED STAKE.
 IN 1973 KRUMBEIN FOUND A B.C. SEE SURVEY # 1-21-C

MONUMENTS AND ACCESSORIES FOUND: CONDITION AND SOURCE

- A 5/8" IRON ROD @ THE NW COR. OF "STANFIELD HTS." LIES S 00°26'05" E, 649.88 FEET.
- A 5/8" IRON ROD @ THE NE COR. L4,B1 OF "VANTAGE NORTH" LIES N 00°02'22" W, 114.60 FEET.
- A 1/2" IRON ROD @ THE SW COR. L5,B1 OF "VANTAGE NORTH" LIES N 89°51'14" W, 273.03 FEET.
- A 1/2" IRON ROD LIES N 00°15'35" E, 153.84 FEET.

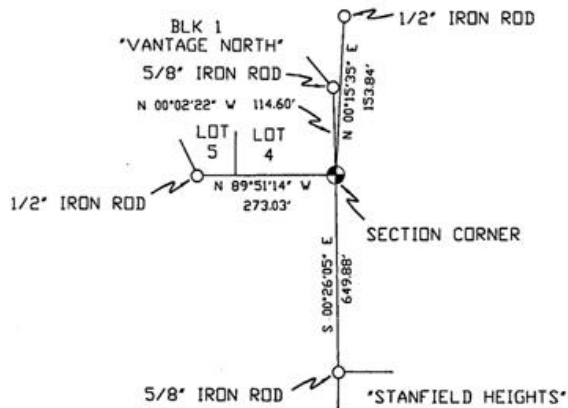
MONUMENT DETAIL



NAD 83/91
 OREGON STATE PLANE
 INTERNATIONAL FEET

777176.1420
 8527133.1310

SKETCH



MONUMENT SET (PROCEDURES AND DESCRIPTION)

NEW ACCESSORIES FROM WHICH

LOCATION AND COMMENTS

JUST NORTH OF GRADE SCHOOL TRACK, @ HEDGE COR. ON NORTH SIDE OF 4' HIGH FENCE.

COMPASS DEC.

FIRM/AGENCY
 PRIMM LAND SURVEYING
 P.O. BOX 1322
 HERMISTON, OREGON 97838

PARTY CHIEF
 KEITH P. PRIMM

NOTES

WITNESS
 BRIT L. PRIMM

RECEIVED BY

Umatilla County Surveyor

Date 2-02

Rec'd By KK

No. 02-49-9

SURVEYOR'S SEAL

REGISTERED
 PROFESSIONAL
 LAND SURVEYOR

BAVAZ

OREGON
 JULY 13, 1999
 BRIT L. PRIMM
 48509

EXPIRATION DATE:12/31/02