

# OREGON CORNER RESTORATION FORM

SECTION 25,36 TOWNSHIP 4 NORTH RANGE 29 EAST

V-23

COUNTY : UMATILLA DATE 11/01

CORNER DESIGNATION

1/4 CORNER

CONDITION REPORT ONLY

NOT FOUND

RENEWED

UNCOVERED

SURVEYED IN

REFERENCED

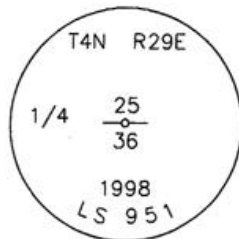
PREVIOUS RENEWALS / SURVEYS, ETC.

ORIGINALLY SURVEYED IN 1861 BY DAVENPORT UNDER CONTRACT #101. HE SET A POST IN A MOUND OF EARTH AND A CHARRED STAKE.  
IN 1998 EDWARDS SET A 1" x 30" IRON PIPE WITH A 2 3/8" BRASS CAP BY SINGLE PROPORTION.

MONUMENTS AND ACCESSORIES FOUND: CONDITION AND SOURCE

A 5/8" x 30" IRON ROD WITH A YELLOW PLASTIC CAP MKD "#951" LIES S 00°24'15" E, 977.22 FEET.  
A 5/8" x 30" IRON ROD WITH A YELLOW PLASTIC CAP MKD "#951" LIES S 44°00'17" E, 577.35 FEET.  
A 1" x 30" IRON PIPE WITH A 2 3/8" BRASS CAP LIES N 89°50'51" E, 533.31 FEET.

MONUMENT DETAIL



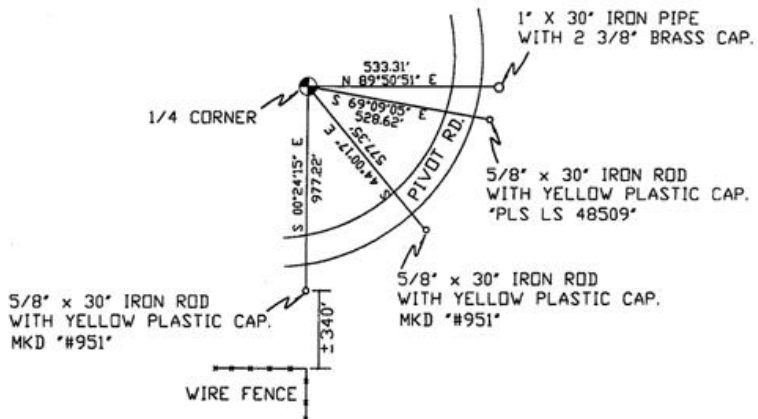
NAD 83/91  
OREGON STATE PLANE  
INTERNATIONAL FEET

777754.8758  
8550892.8058



N.T.S

SKETCH



MONUMENT SET ( PROCEDURES AND DESCRIPTION )

NEW ACCESSORIES FROM WHICH

A 5/8" x 30" IRON ROD WITH A YELLOW PLASTIC CAP MKD "PLS LS 48509" LIES S 69°09'05" W, 528.62 FEET.

LOCATION AND COMMENTS

FROM INTERSECTION OF FEEDVILLE ROAD WITH LOOP ROAD GO SOUTH 1 MILE AND EAST 1 MILE TO CORNER.

COMPASS DEC.

FIRM/AGENCY  
PRIMM LAND SURVEYING  
P.O. BOX 1322  
HERMISTON, OREGON 97838

PARTY CHIEF  
KEITH P. PRIMM

NOTES

WITNESS  
BRIT L. PRIMM

RECEIVED BY

Umatilla County Surveyors

Date 12-01

Red'd By KE

No. 01-213-9

SURVEYOR'S SEAL

REGISTERED  
PROFESSIONAL  
LAND SURVEYOR

*Brit L. Primm*

OREGON  
JULY 13, 1999  
BRIT L. PRIMM  
48509

EXPIRATION DATE:12/31/02