

OREGON CORNER RESTORATION FORM

SECTION 28.33 TOWNSHIP 4 NORTH RANGE 29 EAST V-11
 COUNTY : UMATILLA DATE 01/02

CORNER DESIGNATION

1/4 CORNER

- CONDITION REPORT ONLY
- NOT FOUND
- RENEWED
- UNCOVERED
- SURVEYED IN
- REFERENCED

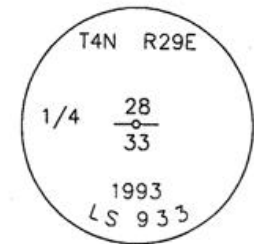
PREVIOUS RENEWALS / SURVEYS, ETC.

ORIGINALLY SURVEYED IN 1861 BY DAVENPORT UNDER CONTRACT #101. HE SET A POST IN A MOUND OF EARTH AND A CHARRED STAKE.
 IN 1993 KRUMBEIN SET A 2 3/8" BRASS CAP AND A 2 3/8" BRASS CAP W.C.

MONUMENTS AND ACCESSORIES FOUND: CONDITION AND SOURCE

- A 2 3/8" BRASS CAP W.C. LIES S 64°36'23" E, 36.11 FEET.
- AN ALUMINUM TAG #951 ON A FENCE POST LIES S 89°20'32" W, 18.03 FEET.
- AN ALUMINUM TAG #951 ON A POWER POLE LIES N 72°45'57" E, 70.83 FEET.
- AN ALUMINUM TAG #951 ON A R x R TIE FENCE POST LIES N 26°12'42" E, 24.31 FEET.

MONUMENT DETAIL

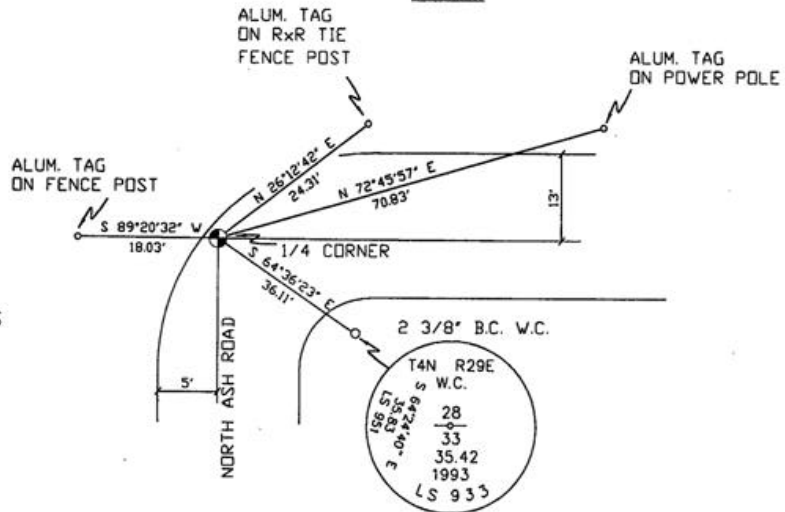


NAD 83/91
 OREGON STATE PLANE
 INTERNATIONAL FEET

777369.9052
 8535050.7586



SKETCH



MONUMENT SET (PROCEDURES AND DESCRIPTION)

NEW ACCESSORIES FROM WHICH

LOCATION AND COMMENTS

FROM INTERSECTION OF HARDING AVE.
 AND EDWARDS ROAD GO EAST ON
 HARDING 1/2 MILE THEN GO
 NORTH 1/2 MILE TO CORNER.

COMPASS DEC.

FIRM/AGENCY
 PRIMM LAND SURVEYING
 P.O. BOX 1322
 HERMISTON, OREGON 97838

PARTY CHIEF
 KEITH P. PRIMM

NOTES

WITNESS
 BRIT L. PRIMM

RECEIVED BY

Umatilla County Surveyor

Date 2-02

Rec'd By KK

No. 02-49-9

SURVEYOR'S SEAL

REGISTERED
 PROFESSIONAL
 LAND SURVEYOR

Brit L. Primm
 OREGON
 JULY 13, 1999
 BRIT L. PRIMM
 48509

EXPIRATION DATE: 12/31/02