

OREGON CORNER RESTORATION FORM

Section 29 Township 4 N Range 29 E

T-9

County UMATILLA Date 3/95

CORNER DESIGNATION

E 1/4 Cor.

- Condition Report Only
- Not Found
- Renewed
- Unrecorded
- Surveyed In
- Referenced Out

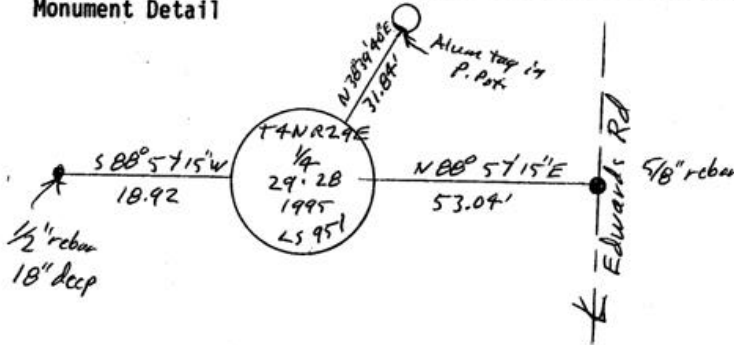
Previous Renewals/Surveys, etc. ORIG SUR. DAVENPORT 1861 #101  
He set a post in mound with charred stake

Monument(s) & Accessories Found: (Condition and Source)

Nothing

Monument Detail

Sketch



Monument Set (Procedures and Description)

By Single proportion I set 1"X30" I. Pipe with 2 3/8" BC  
Stamped as above

SEE MY 1994-1 COUNTY PUBLIC MONUMENTATION SUR.

New Accessories

<u>Alum tag # 951 in P. Pole Bears</u>	<u>N 38° 39' 40" E</u>	<u>31.84 Ft.</u>
<u>" " " "</u>	<u>S 3° 38' 50" E</u>	<u>268.82 Ft.</u>
<u>1/2" X 24" rebar with P. cap # 951</u>	<u>S 88° 57' 15" W</u>	<u>18.92 Ft.</u>
<u>5/8" X 30" " " " "</u>	<u>N 88° 57' 15" E</u>	<u>53.04 Ft.</u>

Location & Comments

From Intersection of Compass Declination  
Eedville Rd with Firm/Agency EDWARDS  
Edwards Rd, Gc SURVEYING  
S 1/2 mile to Cor. Address P. Box 763

Surveyor's Seal

REGISTERED  
PROFESSIONAL  
LAND SURVEYOR

*G. Dennis Edwards*

OREGON  
JULY 16, 1971  
G. DENNIS EDWARDS  
951

RENEWS 12/31/95

RECEIVED BY

Umatilla County Surveyor

Date

Rec'd By

No. 95-60-B

HERMISTON, OR 97838

Party Chief D. EDWARDS

Notes

Witness J. COPPOCK