

OREGON CORNER RESTORATION FORM

SECTION 25 TOWNSHIP 4 NORTH RANGE 29 EAST R-23

COUNTY : UMATILLA DATE 8-98

CORNER DESIGNATION

NORTH 1/4

CONDITION REPORT ONLY
 NOT FOUND
 RENEWED
 UNCOVERED
 SURVEYED IN
 REFERENCED

PREVIOUS RENEWALS / SURVEYS, ETC.

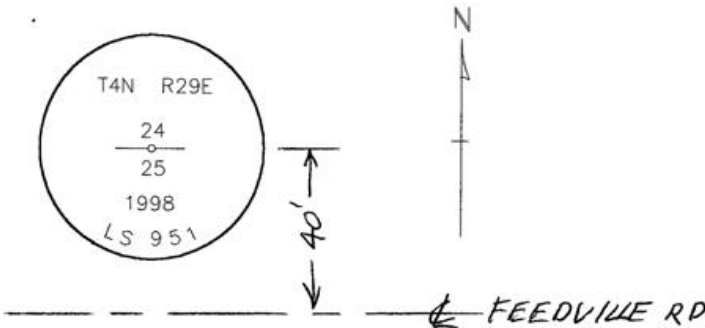
ORIGINALLY SURVEYED IN 1861 BY DAVENPORT UNDER CONTRACT #101. HE SET A POST IN A MOUND OF EARTH AND A CHARRED STAKE.

MONUMENTS AND ACCESSORIES FOUND: CONDITION AND SOURCE

NOTHING

SKETCH

MONUMENT DETAIL



MONUMENT SET (PROCEDURES AND DESCRIPTION)

BY SINGLE PROPORTION, I SET 1" X 30" IRON PIPE WITH A 2 3/8" BRASS CAP STAMPED AS ABOVE, 3" ABOVE THE SURFACE.

NEW ACCESSORIES FROM WHICH

AN ALUMINUM TAG #951 IN A POWER POLE. TAG LIES N 89°.56'20" W, 258.48 FEET.
AN ALUMINUM TAG #951 IN A POWER POLE. TAG LIES S 80°.31'30" E, 10.75 FEET.
AN ALUMINUM TAG #951 IN A POWER POLE. TAG LIES S 41°.30'40" W, 81.29 FEET.
A 5/8" X 30" IRON REBAR WITH PLASTIC CAP #951 LIES S 0°.13'30" W, 61.62 FEET.

LOCATION AND COMMENTS

COMPASS DEC.

SURVEYOR'S SEAL

FIRM/AGENCY
EDWARDS SURVEYING
P.O. BOX 763
HERMISTON, OREGON 97838
97838

PARTY CHIEF
D. EDWARDS

NOTES

WITNESS
RICK SMITH

RECEIVED BY

Umatilla County Surveyor

Date 10-98

Rec'd By KK

No. 98-213-C

REGISTERED
PROFESSIONAL
LAND SURVEYOR

G. Dennis Edwards

OREGON
JULY 16, 1971
G. DENNIS EDWARDS
951

RENEWS 12/31/99