

CORNER RESTORATION FORM

Township 4N Range 29E Section 23, 26 County UMATILLA

State OREGON Date 3/30/2023 Number R-19

Condition Report Only

Corner Designation : 1/4 CORNER: 23, 26

Not Found
 Renewed

Previous Renewals ORIGINAL SOURCE OF CORNER

Surveyed In
 Referenced

ORIGINALLY SURVEYED IN 1861 BY DAVENPORT UNDER

CONTRACT #101, HE SET A STAKE IN MOUND OF EARTH

MONUMENT DETAIL

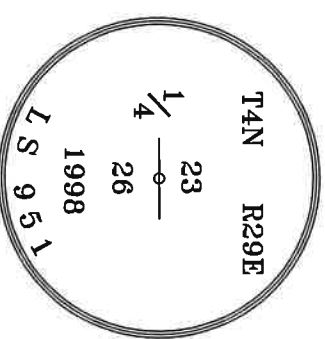
1998 EDWARDS PLACED A 2" ALUMINUM CAP ON 5/8" I.R.

Found Set

COUNTY SURVEY NO. 98-213-C

BASIS OF BEARINGS, NAD 83/91 OREGON STATE PLANE
 COORDINATES NORTH ZONE:

NORTHING: 782939.57
 EASTING: 8545548.96



Monument & Accessories Set/Found (Procedure and Description)

AT CORNER FOUND A 2" ALUMINUM CAP 1/2" BELOW PAVEMENT PARTIALLY READABLE RESTAMPED &
 REFRESHED MONUMENT, COUNTY SURVEY NO. 98-213-C

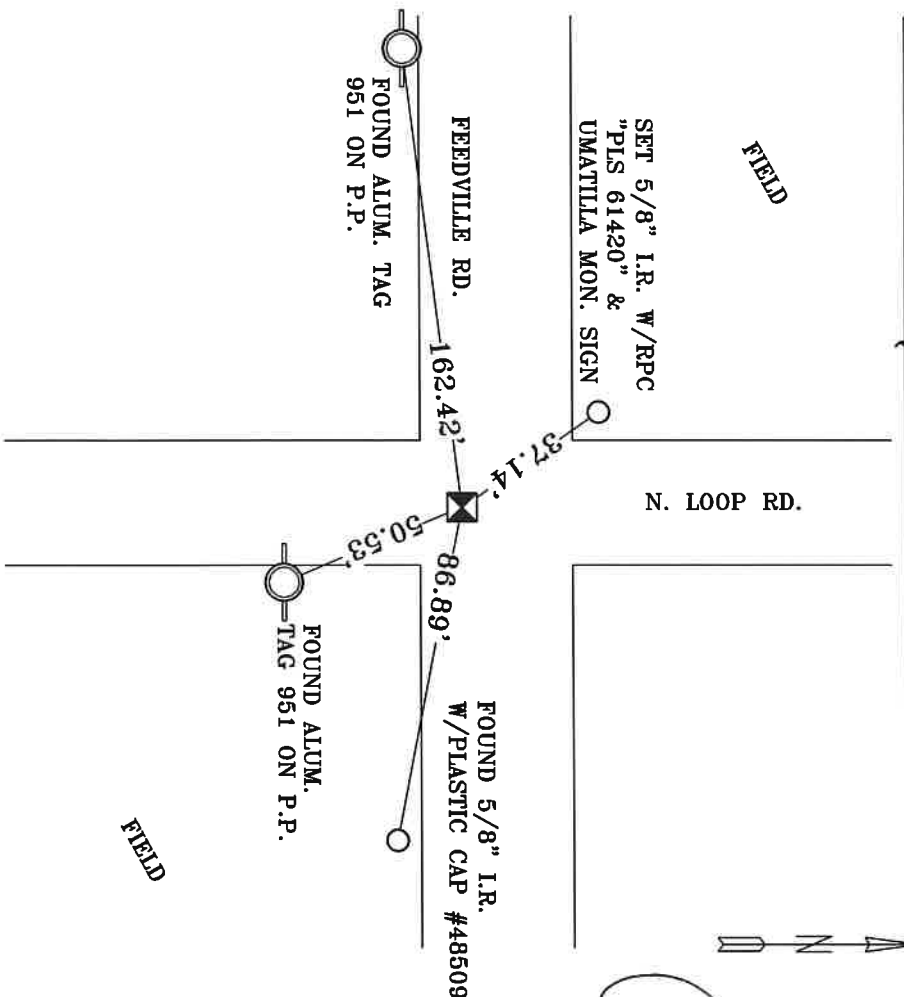
FOUND A ALUMINUM TAG 951 ON POWER POLE S 26°34' E 50.53', CORNER FORM NO. R19-98-213-C

FOUND A ALUMINUM TAG 951 ON POWER POLE S 82°52' W 162.42', CORNER FORM NO. R19-98-213-C

FOUND A 5/8" I.R. W/PLASTIC CAP 48509 S 81°25' E 86.89', CORNER FORM NO. R19-01-213-G

SET A 5/8" I.R. W/RPC "PLS 61420" & SET UMATILLA MON. SIGN ON STOP SIGN POST N 42°29' W 37.14'

Sketch of Monument, Accessories and General Area



**REGISTERED
 PROFESSIONAL
 LAND SURVEYOR**

Lance Clark King
OREGON
 MAY 10, 2011
LANCE CLARK KING
 61420

RENEWALS: 6/30/2023

Agency: **CK3, LLC**
 945 W. ORCHARD
 HERMISTON OREGON 97838
 OFFICE: 541-567-2345
 FAX: 541-567-2305
 WEB: CK3ILC.NET
 Field Book # 0-350

**COUNTY SURVEYOR
 RECORDING INFO**

Received CT
 Filed 5/4/23
 Survey No. 23-042-C
 Drawing No. _____
 Index No. R-19