

# OREGON CORNER RESTORATION FORM

SECTION 21,22,27,28 TOWNSHIP 4 NORTH RANGE 29 EAST R-13  
 COUNTY : UMATILLA DATE 11/01

CORNER DESIGNATION

SECTION CORNER

- CONDITION REPORT ONLY
- NOT FOUND
- RENEWED
- UNCOVERED
- SURVEYED IN
- REFERENCED

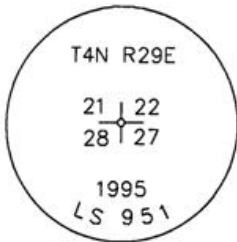
PREVIOUS RENEWALS / SURVEYS, ETC.

ORIGINALLY SURVEYED IN 1861 BY DAVENPORT UNDER CONTRACT #101. HE SET A POST IN A MOUND OF EARTH AND A CHARRED STAKE.  
 IN 1995 EDWARDS SET A 1" x 30" IRON PIPE WITH A 2 3/8" BRASS CAP BY DOUBLE PROPORTION.

MONUMENTS AND ACCESSORIES FOUND: CONDITION AND SOURCE

AN ALUMINUM TAG #951 ON A R x R TIE LIES S 0°29'42" E, 17.89 FEET.  
 AN ALUMINUM TAG #951 ON A R x R TIE LIES N 32°27'52" W, 62.57 FEET.  
 A 1" x 30" IRON PIPE WITH A 2 3/8" BRASS CAP LIES N 0°13'53" E, 40.00 FEET.  
 MILE #20 METAL POST LIES N 21°57'17" W, 37.48 FEET.

MONUMENT DETAIL

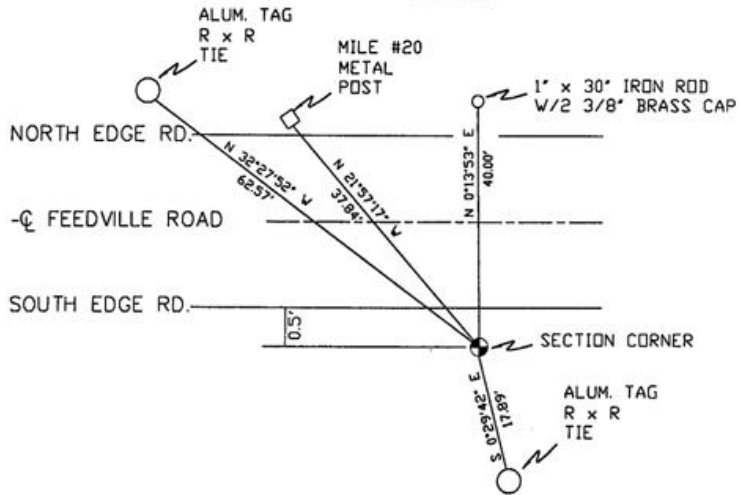


NAD 83/91  
 OREGON STATE PLANE  
 INTERNATIONAL FEET

782750.2710  
 8537570.4561



SKETCH



MONUMENT SET ( PROCEDURES AND DESCRIPTION )

NEW ACCESSORIES FROM WHICH

LOCATION AND COMMENTS

FROM INTERSECTION OF EDWARDS ROAD AND FEEDVILLE ROAD GO EAST 1 MILE ON FEEDVILLE TO COR.

COMPASS DEC.

FIRM/AGENCY  
 PRIMM LAND SURVEYING  
 P.O. BOX 1322  
 HERMISTON, OREGON 97838

PARTY CHIEF  
 KEITH P. PRIMM

NOTES

WITNESS  
 BRIT L. PRIMM

RECEIVED BY

Umatilla County Surveyor

Date 12-01

Rec'd By KK

No. 01-213-9

SURVEYOR'S SEAL

REGISTERED  
 PROFESSIONAL  
 LAND SURVEYOR

*Brit L. Primm*

OREGON  
 JULY 13, 1999  
 BRIT L. PRIMM  
 48509

EXPIRATION DATE:12/31/02